

Form **990**

Return of Organization Exempt From Income Tax
Under section 501(c), 527, or 4947(a)(1) of the Internal Revenue Code (except private foundations)
Do not enter social security numbers on this form as it may be made public.
Go to www.irs.gov/Form990 for instructions and the latest information.

OMB No. 1545-0047
2023
Open to Public Inspection

Department of the Treasury
Internal Revenue Service

A For the 2023 calendar year, or tax year beginning _____, and ending _____

B Check if applicable:
 Address change
 Name change
 Initial return
 Final return/terminated
 Amended return
 Application pending

C Name of organization **RONALD MCDONALD HOUSE CHARITIES OF THE PIEDMONT TRIAD, INC.**
 Doing business as _____
 Number and street (or P.O. box if mail is not delivered to street address) **419 S. HAWTHORNE RD** Room/suite _____
 City or town, state or province, country, and ZIP or foreign postal code **WINSTON SALEM NC 27103**

D Employer identification number **58-1454715**
E Telephone number **336-723-0228**
G Gross receipts \$ **3,541,323**

F Name and address of principal officer:
CHARLES W. KRAFT
419 S. HAWTHORNE ROAD
WINSTON-SALEM NC 27103

H(a) Is this a group return for subordinates? Yes No
H(b) Are all subordinates included? Yes No
 If "No," attach a list. See instructions

I Tax-exempt status: 501(c)(3) 501(c) () (insert no.) 4947(a)(1) or 527

J Website: **WWW.RMHCP.T.ORG** **H(c)** Group exemption number _____

K Form of organization: Corporation Trust Association Other **L** Year of formation: **1981** **M** State of legal domicile: **NC**

Part I Summary

Activities & Governance	1 Briefly describe the organization's mission or most significant activities: THE RONALD MCDONALD HOUSE CHARITIES OF THE PIEDMONT TRIAD, INC. PROVIDES A "HOME AWAY FROM HOME", IN OUR HOUSE AND FAMILY ROOMS FOR FAMILIES WITH CHILDREN RECEIVING MEDICAL CARE IN OUR COMMUNITY.		
	2 Check this box <input type="checkbox"/> if the organization discontinued its operations or disposed of more than 25% of its net assets.		
	3 Number of voting members of the governing body (Part VI, line 1a)	3	30
	4 Number of independent voting members of the governing body (Part VI, line 1b)	4	30
	5 Total number of individuals employed in calendar year 2023 (Part V, line 2a)	5	29
	6 Total number of volunteers (estimate if necessary)	6	1308
	7a Total unrelated business revenue from Part VIII, column (C), line 12	7a	0
b Net unrelated business taxable income from Form 990-T, Part I, line 11	7b	0	
Revenue	8 Contributions and grants (Part VIII, line 1h)	Prior Year	Current Year
	9 Program service revenue (Part VIII, line 2g)	1,773,932	2,112,127
	10 Investment income (Part VIII, column (A), lines 3, 4, and 7d)	8,416	5,334
	11 Other revenue (Part VIII, column (A), lines 5, 6d, 8c, 9c, 10c, and 11e)	268,225	216,123
	12 Total revenue - add lines 8 through 11 (must equal Part VIII, column (A), line 12)	87,299	99,787
Expenses	13 Grants and similar amounts paid (Part IX, column (A), lines 1-3)	2,137,872	2,433,371
	14 Benefits paid to or for members (Part IX, column (A), line 4)		0
	15 Salaries, other compensation, employee benefits (Part IX, column (A), lines 5-10)		0
	16a Professional fundraising fees (Part IX, column (A), line 11e)	954,762	1,049,388
	b Total fundraising expenses (Part IX, column (D), line 25)	132,341	105,398
	17 Other expenses (Part IX, column (A), lines 11a-11d, 11f-24e)	351,291	
	18 Total expenses. Add lines 13-17 (must equal Part IX, column (A), line 25)	1,067,624	1,276,203
19 Revenue less expenses. Subtract line 18 from line 12	2,154,727	2,430,989	
Net Assets or Fund Balances	20 Total assets (Part X, line 16)	-16,855	2,382
	21 Total liabilities (Part X, line 26)	Beginning of Current Year	End of Year
	22 Net assets or fund balances. Subtract line 21 from line 20	15,529,329	16,500,185
		85,773	81,486
		15,443,556	16,418,699

Part II Signature Block

Under penalties of perjury, I declare that I have examined this return, including accompanying schedules and statements, and to the best of my knowledge and belief, it is true, correct, and complete. Declaration of preparer (other than officer) is based on all information of which preparer has any knowledge.

Sign Here
 Signature of officer: *Charles W. Kraft* Date: **5-30-2024**
CHARLES W. KRAFT **CHIEF EXEC OFFICER**
 Type or print name and title

Paid Preparer Use Only
 Print/Type preparer's name: **DAVID JOHNSTON** Preparer's signature: *DAVID JOHNSTON* Date: **05/30/24** Check if self-employed if PTIN **P00362238**
 Firm's name: **Gray, Callison & Jones CPA, PC** Firm's EIN: **81-4888848**
 Firm's address: **3813 Forrestgate Dr** Phone no.: **336-760-3210**
Winston Salem, NC 27103

Part III Statement of Program Service Accomplishments

Check if Schedule O contains a response or note to any line in this Part III

1 Briefly describe the organization's mission:

THE RONALD MCDONALD HOUSE CHARITIES OF THE PIEDMONT TRIAD, INC. PROVIDES A "HOME AWAY FROM HOME", IN OUR HOUSE AND FAMILY ROOMS FOR FAMILIES WITH CHILDREN RECEIVING MEDICAL CARE IN OUR COMMUNITY.

2 Did the organization undertake any significant program services during the year which were not listed on the prior Form 990 or 990-EZ? Yes No

If "Yes," describe these new services on Schedule O.

3 Did the organization cease conducting, or make significant changes in how it conducts, any program services? Yes No

If "Yes," describe these changes on Schedule O.

4 Describe the organization's program service accomplishments for each of its three largest program services, as measured by expenses. Section 501(c)(3) and 501(c)(4) organizations are required to report the amount of grants and allocations to others, the total expenses, and revenue, if any, for each program service reported.

4a (Code:) (Expenses \$ **944,906** including grants of \$) (Revenue \$ **5,334**)
See Schedule O

4b (Code:) (Expenses \$ **311,685** including grants of \$) (Revenue \$)
See Schedule O

4c (Code:) (Expenses \$ **302,131** including grants of \$) (Revenue \$)
See Schedule O

4d Other program services (Describe on Schedule O.)
(Expenses \$ **244,318** including grants of \$) (Revenue \$)

4e Total program service expenses **1,803,040**

Part IV Checklist of Required Schedules

		Yes	No
1	Is the organization described in section 501(c)(3) or 4947(a)(1) (other than a private foundation)? If "Yes," complete Schedule A	X	
2	Is the organization required to complete Schedule B, Schedule of Contributors? See instructions	X	
3	Did the organization engage in direct or indirect political campaign activities on behalf of or in opposition to candidates for public office? If "Yes," complete Schedule C, Part I		X
4	Section 501(c)(3) organizations. Did the organization engage in lobbying activities, or have a section 501(h) election in effect during the tax year? If "Yes," complete Schedule C, Part II		X
5	Is the organization a section 501(c)(4), 501(c)(5), or 501(c)(6) organization that receives membership dues, assessments, or similar amounts as defined in Rev. Proc. 98-19? If "Yes," complete Schedule C, Part III		X
6	Did the organization maintain any donor advised funds or any similar funds or accounts for which donors have the right to provide advice on the distribution or investment of amounts in such funds or accounts? If "Yes," complete Schedule D, Part I		X
7	Did the organization receive or hold a conservation easement, including easements to preserve open space, the environment, historic land areas, or historic structures? If "Yes," complete Schedule D, Part II		X
8	Did the organization maintain collections of works of art, historical treasures, or other similar assets? If "Yes," complete Schedule D, Part III		X
9	Did the organization report an amount in Part X, line 21, for escrow or custodial account liability; serve as a custodian for amounts not listed in Part X; or provide credit counseling, debt management, credit repair, or debt negotiation services? If "Yes," complete Schedule D, Part IV		X
10	Did the organization, directly or through a related organization, hold assets in donor-restricted endowments or in quasi-endowments? If "Yes," complete Schedule D, Part V	X	
11	If the organization's answer to any of the following questions is "Yes," then complete Schedule D, Parts VI, VII, VIII, IX, or X, as applicable.		
a	Did the organization report an amount for land, buildings, and equipment in Part X, line 10? If "Yes," complete Schedule D, Part VI	X	
b	Did the organization report an amount for investments—other securities in Part X, line 12, that is 5% or more of its total assets reported in Part X, line 16? If "Yes," complete Schedule D, Part VII	X	
c	Did the organization report an amount for investments—program related in Part X, line 13, that is 5% or more of its total assets reported in Part X, line 16? If "Yes," complete Schedule D, Part VIII		X
d	Did the organization report an amount for other assets in Part X, line 15, that is 5% or more of its total assets reported in Part X, line 16? If "Yes," complete Schedule D, Part IX		X
e	Did the organization report an amount for other liabilities in Part X, line 25? If "Yes," complete Schedule D, Part X	X	
f	Did the organization's separate or consolidated financial statements for the tax year include a footnote that addresses the organization's liability for uncertain tax positions under FIN 48 (ASC 740)? If "Yes," complete Schedule D, Part X	X	
12a	Did the organization obtain separate, independent audited financial statements for the tax year? If "Yes," complete Schedule D, Parts XI and XII	X	
b	Was the organization included in consolidated, independent audited financial statements for the tax year? If "Yes," and if the organization answered "No" to line 12a, then completing Schedule D, Parts XI and XII is optional		X
13	Is the organization a school described in section 170(b)(1)(A)(ii)? If "Yes," complete Schedule E		X
14a	Did the organization maintain an office, employees, or agents outside of the United States?		X
b	Did the organization have aggregate revenues or expenses of more than \$10,000 from grantmaking, fundraising, business, investment, and program service activities outside the United States, or aggregate foreign investments valued at \$100,000 or more? If "Yes," complete Schedule F, Parts I and IV		X
15	Did the organization report on Part IX, column (A), line 3, more than \$5,000 of grants or other assistance to or for any foreign organization? If "Yes," complete Schedule F, Parts II and IV		X
16	Did the organization report on Part IX, column (A), line 3, more than \$5,000 of aggregate grants or other assistance to or for foreign individuals? If "Yes," complete Schedule F, Parts III and IV		X
17	Did the organization report a total of more than \$15,000 of expenses for professional fundraising services on Part IX, column (A), lines 6 and 11e? If "Yes," complete Schedule G, Part I. See instructions	X	
18	Did the organization report more than \$15,000 total of fundraising event gross income and contributions on Part VIII, lines 1c and 8a? If "Yes," complete Schedule G, Part II	X	
19	Did the organization report more than \$15,000 of gross income from gaming activities on Part VIII, line 9a? If "Yes," complete Schedule G, Part III		X
20a	Did the organization operate one or more hospital facilities? If "Yes," complete Schedule H		X
b	If "Yes" to line 20a, did the organization attach a copy of its audited financial statements to this return?		
21	Did the organization report more than \$5,000 of grants or other assistance to any domestic organization or domestic government on Part IX, column (A), line 1? If "Yes," complete Schedule I, Parts I and II		X

Part IV Checklist of Required Schedules (continued)

		Yes	No
22	Did the organization report more than \$5,000 of grants or other assistance to or for domestic individuals on Part IX, column (A), line 2? <i>If "Yes," complete Schedule I, Parts I and III</i>		X
23	Did the organization answer "Yes" to Part VII, Section A, line 3, 4, or 5 about compensation of the organization's current and former officers, directors, trustees, key employees, and highest compensated employees? <i>If "Yes," complete Schedule J</i>		X
24a	Did the organization have a tax-exempt bond issue with an outstanding principal amount of more than \$100,000 as of the last day of the year, that was issued after December 31, 2002? <i>If "Yes," answer lines 24b through 24d and complete Schedule K. If "No," go to line 25a</i>		X
b	Did the organization invest any proceeds of tax-exempt bonds beyond a temporary period exception?		
c	Did the organization maintain an escrow account other than a refunding escrow at any time during the year to defease any tax-exempt bonds?		
d	Did the organization act as an "on behalf of" issuer for bonds outstanding at any time during the year?		
25a	Section 501(c)(3), 501(c)(4), and 501(c)(29) organizations. Did the organization engage in an excess benefit transaction with a disqualified person during the year? <i>If "Yes," complete Schedule L, Part I</i>		X
b	Is the organization aware that it engaged in an excess benefit transaction with a disqualified person in a prior year, and that the transaction has not been reported on any of the organization's prior Forms 990 or 990-EZ? <i>If "Yes," complete Schedule L, Part I</i>		X
26	Did the organization report any amount on Part X, line 5 or 22, for receivables from or payables to any current or former officer, director, trustee, key employee, creator or founder, substantial contributor, or 35% controlled entity or family member of any of these persons? <i>If "Yes," complete Schedule L, Part II</i>		X
27	Did the organization provide a grant or other assistance to any current or former officer, director, trustee, key employee, creator or founder, substantial contributor or employee thereof, a grant selection committee member, or to a 35% controlled entity (including an employee thereof) or family member of any of these persons? <i>If "Yes," complete Schedule L, Part III</i>		X
28	Was the organization a party to a business transaction with one of the following parties? (See the Schedule L, Part IV, instructions for applicable filing thresholds, conditions, and exceptions).		
a	A current or former officer, director, trustee, key employee, creator or founder, or substantial contributor? <i>If "Yes," complete Schedule L, Part IV</i>		X
b	A family member of any individual described in line 28a? <i>If "Yes," complete Schedule L, Part IV</i>		X
c	A 35% controlled entity of one or more individuals and/or organizations described in line 28a or 28b? <i>If "Yes," complete Schedule L, Part IV</i>		X
29	Did the organization receive more than \$25,000 in noncash contributions? <i>If "Yes," complete Schedule M</i>	X	
30	Did the organization receive contributions of art, historical treasures, or other similar assets, or qualified conservation contributions? <i>If "Yes," complete Schedule M</i>		X
31	Did the organization liquidate, terminate, or dissolve and cease operations? <i>If "Yes," complete Schedule N, Part I</i>		X
32	Did the organization sell, exchange, dispose of, or transfer more than 25% of its net assets? <i>If "Yes," complete Schedule N, Part II</i>		X
33	Did the organization own 100% of an entity disregarded as separate from the organization under Regulations sections 301.7701-2 and 301.7701-3? <i>If "Yes," complete Schedule R, Part I</i>		X
34	Was the organization related to any tax-exempt or taxable entity? <i>If "Yes," complete Schedule R, Part II, III, or IV, and Part V, line 1</i>		X
35a	Did the organization have a controlled entity within the meaning of section 512(b)(13)?		X
b	If "Yes" to line 35a, did the organization receive any payment from or engage in any transaction with a controlled entity within the meaning of section 512(b)(13)? <i>If "Yes," complete Schedule R, Part V, line 2</i>		
36	Section 501(c)(3) organizations. Did the organization make any transfers to an exempt non-charitable related organization? <i>If "Yes," complete Schedule R, Part V, line 2</i>		X
37	Did the organization conduct more than 5% of its activities through an entity that is not a related organization and that is treated as a partnership for federal income tax purposes? <i>If "Yes," complete Schedule R, Part VI</i>		X
38	Did the organization complete Schedule O and provide explanations on Schedule O for Part VI, lines 11b and 19? Note: All Form 990 filers are required to complete Schedule O.	X	

Part V Statements Regarding Other IRS Filings and Tax Compliance

Check if Schedule O contains a response or note to any line in this Part V

		Yes	No
1a	Enter the number reported in box 3 of Form 1096. Enter -0- if not applicable		
b	Enter the number of Forms W-2G included on line 1a. Enter -0- if not applicable		
c	Did the organization comply with backup withholding rules for reportable payments to vendors and reportable gaming (gambling) winnings to prize winners?	X	

Part V Statements Regarding Other IRS Filings and Tax Compliance (continued)		Yes	No		
2a	Enter the number of employees reported on Form W-3, Transmittal of Wage and Tax Statements, filed for the calendar year ending with or within the year covered by this return	2a	29		
b	If at least one is reported on line 2a, did the organization file all required federal employment tax returns?	2b	X		
3a	Did the organization have unrelated business gross income of \$1,000 or more during the year?	3a		X	
b	If "Yes," has it filed a Form 990-T for this year? If "No" to line 3b, provide an explanation on Schedule O	3b			
4a	At any time during the calendar year, did the organization have an interest in, or a signature or other authority over, a financial account in a foreign country (such as a bank account, securities account, or other financial account)?	4a			X
b	If "Yes," enter the name of the foreign country See instructions for filing requirements for FinCEN Form 114, Report of Foreign Bank and Financial Accounts (FBAR).				
5a	Was the organization a party to a prohibited tax shelter transaction at any time during the tax year?	5a			X
b	Did any taxable party notify the organization that it was or is a party to a prohibited tax shelter transaction?	5b			X
c	If "Yes" to line 5a or 5b, did the organization file Form 8886-T?	5c			
6a	Does the organization have annual gross receipts that are normally greater than \$100,000, and did the organization solicit any contributions that were not tax deductible as charitable contributions?	6a			X
b	If "Yes," did the organization include with every solicitation an express statement that such contributions or gifts were not tax deductible?	6b			
7	Organizations that may receive deductible contributions under section 170(c).				
a	Did the organization receive a payment in excess of \$75 made partly as a contribution and partly for goods and services provided to the payor?	7a	X		
b	If "Yes," did the organization notify the donor of the value of the goods or services provided?	7b	X		
c	Did the organization sell, exchange, or otherwise dispose of tangible personal property for which it was required to file Form 8282?	7c			X
d	If "Yes," indicate the number of Forms 8282 filed during the year	7d			
e	Did the organization receive any funds, directly or indirectly, to pay premiums on a personal benefit contract?	7e			X
f	Did the organization, during the year, pay premiums, directly or indirectly, on a personal benefit contract?	7f			X
g	If the organization received a contribution of qualified intellectual property, did the organization file Form 8899 as required?	7g			
h	If the organization received a contribution of cars, boats, airplanes, or other vehicles, did the organization file a Form 1098-C?	7h			
8	Sponsoring organizations maintaining donor advised funds. Did a donor advised fund maintained by the sponsoring organization have excess business holdings at any time during the year?	8			
9	Sponsoring organizations maintaining donor advised funds.				
a	Did the sponsoring organization make any taxable distributions under section 4966?	9a			
b	Did the sponsoring organization make a distribution to a donor, donor advisor, or related person?	9b			
10	Section 501(c)(7) organizations. Enter:				
a	Initiation fees and capital contributions included on Part VIII, line 12	10a			
b	Gross receipts, included on Form 990, Part VIII, line 12, for public use of club facilities	10b			
11	Section 501(c)(12) organizations. Enter:				
a	Gross income from members or shareholders	11a			
b	Gross income from other sources. (Do not net amounts due or paid to other sources against amounts due or received from them.)	11b			
12a	Section 4947(a)(1) non-exempt charitable trusts. Is the organization filing Form 990 in lieu of Form 1041?	12a			
b	If "Yes," enter the amount of tax-exempt interest received or accrued during the year	12b			
13	Section 501(c)(29) qualified nonprofit health insurance issuers.				
a	Is the organization licensed to issue qualified health plans in more than one state? Note: See the instructions for additional information the organization must report on Schedule O.	13a			
b	Enter the amount of reserves the organization is required to maintain by the states in which the organization is licensed to issue qualified health plans	13b			
c	Enter the amount of reserves on hand	13c			
14a	Did the organization receive any payments for indoor tanning services during the tax year?	14a			X
b	If "Yes," has it filed a Form 720 to report these payments? If "No," provide an explanation on Schedule O	14b			
15	Is the organization subject to the section 4960 tax on payment(s) of more than \$1,000,000 in remuneration or excess parachute payment(s) during the year? If "Yes," see instructions and file Form 4720, Schedule N.	15			X
16	Is the organization an educational institution subject to the section 4968 excise tax on net investment income? If "Yes," complete Form 4720, Schedule O.	16			X
17	Section 501(c)(21) organizations. Did the trust, any disqualified or other person engage in any activities that would result in the imposition of an excise tax under section 4951, 4952 or 4953? If "Yes," complete Form 6069.	17			

Part VI Governance, Management, and Disclosure For each "Yes" response to lines 2 through 7b below, and for a "No" response to line 8a, 8b, or 10b below, describe the circumstances, processes, or changes on Schedule O. See instructions. Check if Schedule O contains a response or note to any line in this Part VI

Section A. Governing Body and Management

		Yes	No
1a	Enter the number of voting members of the governing body at the end of the tax year If there are material differences in voting rights among members of the governing body, or if the governing body delegated broad authority to an executive committee or similar committee, explain on Schedule O.		
1b	Enter the number of voting members included on line 1a, above, who are independent		
2	Did any officer, director, trustee, or key employee have a family relationship or a business relationship with any other officer, director, trustee, or key employee?		X
3	Did the organization delegate control over management duties customarily performed by or under the direct supervision of officers, directors, trustees, or key employees to a management company or other person?		X
4	Did the organization make any significant changes to its governing documents since the prior Form 990 was filed?		X
5	Did the organization become aware during the year of a significant diversion of the organization's assets?		X
6	Did the organization have members or stockholders?		X
7a	Did the organization have members, stockholders, or other persons who had the power to elect or appoint one or more members of the governing body?		X
7b	Are any governance decisions of the organization reserved to (or subject to approval by) members, stockholders, or persons other than the governing body?		X
8	Did the organization contemporaneously document the meetings held or written actions undertaken during the year by the following:		
8a	The governing body?	X	
8b	Each committee with authority to act on behalf of the governing body?	X	
9	Is there any officer, director, trustee, or key employee listed in Part VII, Section A, who cannot be reached at the organization's mailing address? If "Yes," provide the names and addresses on Schedule O		X

Section B. Policies (This Section B requests information about policies not required by the Internal Revenue Code.)

		Yes	No
10a	Did the organization have local chapters, branches, or affiliates?		X
10b	If "Yes," did the organization have written policies and procedures governing the activities of such chapters, affiliates, and branches to ensure their operations are consistent with the organization's exempt purposes?		
11a	Has the organization provided a complete copy of this Form 990 to all members of its governing body before filing the form?	X	
11b	Describe on Schedule O the process, if any, used by the organization to review this Form 990.		
12a	Did the organization have a written conflict of interest policy? If "No," go to line 13	X	
12b	Were officers, directors, or trustees, and key employees required to disclose annually interests that could give rise to conflicts?	X	
12c	Did the organization regularly and consistently monitor and enforce compliance with the policy? If "Yes," describe on Schedule O how this was done	X	
13	Did the organization have a written whistleblower policy?	X	
14	Did the organization have a written document retention and destruction policy?	X	
15	Did the process for determining compensation of the following persons include a review and approval by independent persons, comparability data, and contemporaneous substantiation of the deliberation and decision?		
15a	The organization's CEO, Executive Director, or top management official	X	
15b	Other officers or key employees of the organization	X	
	If "Yes" to line 15a or 15b, describe the process on Schedule O. See instructions.		
16a	Did the organization invest in, contribute assets to, or participate in a joint venture or similar arrangement with a taxable entity during the year?		X
16b	If "Yes," did the organization follow a written policy or procedure requiring the organization to evaluate its participation in joint venture arrangements under applicable federal tax law, and take steps to safeguard the organization's exempt status with respect to such arrangements?		

Section C. Disclosure

- 17** List the states with which a copy of this Form 990 is required to be filed **NC**
- 18** Section 6104 requires an organization to make its Forms 1023 (1024 or 1024-A, if applicable), 990, and 990-T (section 501(c)(3)s only) available for public inspection. Indicate how you made these available. Check all that apply.
 Own website Another's website Upon request Other (explain on Schedule O)
- 19** Describe on Schedule O whether (and if so, how) the organization made its governing documents, conflict of interest policy, and financial statements available to the public during the tax year.
- 20** State the name, address, and telephone number of the person who possesses the organization's books and records.

CHARLES W. KRAFT **419 S. HAWTHORNE ROAD**
WINSTON-SALEM **NC 27103** **336-723-0228**

Part VII Compensation of Officers, Directors, Trustees, Key Employees, Highest Compensated Employees, and Independent Contractors

Check if Schedule O contains a response or note to any line in this Part VII

Section A. Officers, Directors, Trustees, Key Employees, and Highest Compensated Employees

1a Complete this table for all persons required to be listed. Report compensation for the calendar year ending with or within the organization's tax year.

- List all of the organization's **current** officers, directors, trustees (whether individuals or organizations), regardless of amount of compensation. Enter -0- in columns (D), (E), and (F) if no compensation was paid.
- List all of the organization's **current** key employees, if any. See instructions for definition of "key employee."
- List the organization's five **current** highest compensated employees (other than an officer, director, trustee, or key employee) who received reportable compensation (box 5 of Form W-2, box 6 of Form 1099-MISC, and/or box 1 of Form 1099-NEC) of more than \$100,000 from the organization and any related organizations.
- List all of the organization's **former** officers, key employees, and highest compensated employees who received more than \$100,000 of reportable compensation from the organization and any related organizations.
- List all of the organization's **former directors or trustees** that received, in the capacity as a former director or trustee of the organization, more than \$10,000 of reportable compensation from the organization and any related organizations. See the instructions for the order in which to list the persons above.

Check this box if neither the organization nor any related organization compensated any current officer, director, or trustee.

(A) Name and title	(B) Average hours per week (list any hours for related organizations below dotted line)	(C) Position (do not check more than one box, unless person is both an officer and a director/trustee)						(D) Reportable compensation from the organization (W-2/1099-MISC/1099-NEC)	(E) Reportable compensation from related organizations (W-2/1099-MISC/1099-NEC)	(F) Estimated amount of other compensation from the organization and related organizations
		Individual trustee or director	Institutional trustee	Officer	Key employee	Highest compensated employee	Former			
(1) CHARLES W. KRAFT	40.00									
CHIEF EXEC OFFICER	0.00			X			116,281	0	22,900	
(2) CURTIS BLAND	2.00									
TREASURER	0.00	X		X			0	0	0	
(3) BEN BLOODWORTH	1.00									
DIRECTOR	0.00	X					0	0	0	
(4) DJ BRITT	1.00									
DIRECTOR	0.00	X					0	0	0	
(5) TREMONTEO CRAWFORD	1.00									
DIRECTOR	0.00	X					0	0	0	
(6) KELLY CRONIN	1.00									
DIRECTOR	0.00	X					0	0	0	
(7) JOHN DALENA	1.00									
DIRECTOR	0.00	X					0	0	0	
(8) LAURA DEZARN	1.00									
DIRECTOR	0.00	X					0	0	0	
(9) KAREN GAINEY	1.00									
DIRECTOR	0.00	X					0	0	0	
(10) BETSY GAONA	1.00									
DIRECTOR	0.00	X					0	0	0	
(11) JUSTIN GOMEZ	1.00									
DIRECTOR	0.00	X					0	0	0	

Part VII Section A. Officers, Directors, Trustees, Key Employees, and Highest Compensated Employees (continued)

(A) Name and title	(B) Average hours per week per week (list any hours for related organizations below dotted line)	(C) Position (do not check more than one box, unless person is both an officer and a director/trustee)						(D) Reportable compensation from the organization (W-2/1099-MISC/1099-NEC)	(E) Reportable compensation from related organizations (W-2/1099-MISC/1099-NEC)	(F) Estimated amount of other compensation from the organization and related organizations
		Individual trustee or director	Institutional trustee	Officer	Key employee	Highest compensated employee	Former			
(12) BROOKS HARDEN	1.00									
DIRECTOR	0.00	X					0	0	0	
(13) REBECCA MCNEELY	1.00									
DIRECTOR	0.00	X					0	0	0	
(14) VIVIAN LANGLEY	1.00									
DIRECTOR	0.00	X					0	0	0	
(15) KATRINA PATTERSON	1.00									
DIRECTOR	0.00	X					0	0	0	
(16) ERIKA MIELKE	2.00									
IMMEDIATE PAST PRESI	0.00	X					0	0	0	
(17) CATHY PACE	1.00									
DIRECTOR	0.00	X					0	0	0	
(18) JUDY PIETSCH	1.00									
DIRECTOR	0.00	X					0	0	0	
(19) JASMINE PITT	2.00									
SECRETARY	0.00	X		X			0	0	0	
1b Subtotal							116,281		22,900	
c Total from continuation sheets to Part VII, Section A										
d Total (add lines 1b and 1c)							116,281		22,900	

2 Total number of individuals (including but not limited to those listed above) who received more than \$100,000 of reportable compensation from the organization **1**

	Yes	No
3 Did the organization list any former officer, director, trustee, key employee, or highest compensated employee on line 1a? <i>If "Yes," complete Schedule J for such individual</i>	3	X
4 For any individual listed on line 1a, is the sum of reportable compensation and other compensation from the organization and related organizations greater than \$150,000? <i>If "Yes," complete Schedule J for such individual</i>	4	X
5 Did any person listed on line 1a receive or accrue compensation from any unrelated organization or individual for services rendered to the organization? <i>If "Yes," complete Schedule J for such person</i>	5	X

Section B. Independent Contractors

1 Complete this table for your five highest compensated independent contractors that received more than \$100,000 of compensation from the organization. Report compensation for the calendar year ending with or within the organization's tax year.

(A) Name and business address	(B) Description of services	(C) Compensation

2 Total number of independent contractors (including but not limited to those listed above) who received more than \$100,000 of compensation from the organization **0**

Part VIII Statement of Revenue

Check if Schedule O contains a response or note to any line in this Part VIII

		(A) Total revenue	(B) Related or exempt function revenue	(C) Unrelated business revenue	(D) Revenue excluded from tax under sections 512-514	
Contributions, Gifts, Grants and Other Similar Amounts	1a Federated campaigns	1a				
	b Membership dues	1b				
	c Fundraising events	1c	283,932			
	d Related organizations	1d				
	e Government grants (contributions)	1e				
	f All other contributions, gifts, grants, and similar amounts not included above	1f	1,828,195			
	g Noncash contributions included in lines 1a-1f	1g	\$ 207,067			
	h Total. Add lines 1a-1f		2,112,127			
		Business Code				
Program Service Revenue	2a ROOM DONATIONS	621400	5,334	5,334		
	b					
	c					
	d					
	e					
	f All other program service revenue					
	g Total. Add lines 2a-2f		5,334			
Other Revenue	3 Investment income (including dividends, interest, and other similar amounts)		118,295		118,295	
	4 Income from investment of tax-exempt bond proceeds					
	5 Royalties					
	6a Gross rents		(i) Real	(ii) Personal		
		6a				
		6b Less: rental expenses				
	6c Rental inc. or (loss)					
	d Net rental income or (loss)					
	7a Gross amount from sales of assets other than inventory		(i) Securities	(ii) Other		
		7a	1,097,460			
		7b Less: cost or other basis and sales exps.	999,632	0		
		7c Gain or (loss)	97,828			
	d Net gain or (loss)		97,828	0	97,828	
	8a Gross income from fundraising events (not including \$ 283,932 of contributions reported on line 1c). See Part IV, line 18					
		8a	208,107			
8b Less: direct expenses		108,320				
c Net income or (loss) from fundraising events		99,787		99,787		
9a Gross income from gaming activities. See Part IV, line 19						
	9a					
	9b Less: direct expenses					
c Net income or (loss) from gaming activities						
10a Gross sales of inventory, less returns and allowances						
	10a					
	10b Less: cost of goods sold					
c Net income or (loss) from sales of inventory						
Miscellaneous Revenue		Business Code				
	11a					
	b					
	c					
	d All other revenue					
	e Total. Add lines 11a-11d					
12 Total revenue. See instructions		2,433,371	5,334	0	315,910	

Part IX Statement of Functional Expenses

Section 501(c)(3) and 501(c)(4) organizations must complete all columns. All other organizations must complete column (A).

Check if Schedule O contains a response or note to any line in this Part IX

Do not include amounts reported on lines 6b, 7b, 8b, 9b, and 10b of Part VIII.

	(A) Total expenses	(B) Program service expenses	(C) Management and general expenses	(D) Fundraising expenses
1 Grants and other assistance to domestic organizations and domestic governments. See Part IV, line 21				
2 Grants and other assistance to domestic individuals. See Part IV, line 22				
3 Grants and other assistance to foreign organizations, foreign governments, and foreign individuals. See Part IV, lines 15 and 16				
4 Benefits paid to or for members				
5 Compensation of current officers, directors, trustees, and key employees	143,200	50,120	57,280	35,800
6 Compensation not included above to disqualified persons (as defined under section 4958(f)(1)) and persons described in section 4958(c)(3)(B)				
7 Other salaries and wages	740,648	588,288	45,260	107,100
8 Pension plan accruals and contributions (include section 401(k) and 403(b) employer contributions)	24,689	20,836	574	3,279
9 Other employee benefits	77,613	62,823	3,846	10,944
10 Payroll taxes	63,238	46,304	6,858	10,076
11 Fees for services (nonemployees):				
a Management				
b Legal				
c Accounting	17,000		17,000	
d Lobbying				
e Professional fundraising services. See Part IV, line 17	105,398			105,398
f Investment management fees	94,541		94,541	
g Other. (If line 11g amount exceeds 10% of line 25, column (A) amount, list line 11g expenses on Schedule O.)	23,085	8,662	12,317	2,106
12 Advertising and promotion				
13 Office expenses	77,169	33,815	2,228	41,126
14 Information technology	48,207	44,319	1,555	2,333
15 Royalties				
16 Occupancy	52,519	51,856	181	482
17 Travel	7,791	5,617	719	1,455
18 Payments of travel or entertainment expenses for any federal, state, or local public officials				
19 Conferences, conventions, and meetings	43,710	24,133	12,449	7,128
20 Interest	407		407	
21 Payments to affiliates				
22 Depreciation, depletion, and amortization	291,886	289,261	716	1,909
23 Insurance	37,624	32,071	5,130	423
24 Other expenses. Itemize expenses not covered above. (List miscellaneous expenses on line 24e. If line 24e amount exceeds 10% of line 25, column (A) amount, list line 24e expenses on Schedule O.)				
a PROGRAM SUPPLIES	378,806	378,806		
b SECURITY SERVICES	81,132	81,132		
c MAINTENANCE & REPAIRS	56,502	55,743	207	552
d CREDIT CARD FEES	18,669			18,669
e All other expenses	47,155	29,254	15,390	2,511
25 Total functional expenses. Add lines 1 through 24e	2,430,989	1,803,040	276,658	351,291
26 Joint costs. Complete this line only if the organization reported in column (B) joint costs from a combined educational campaign and fundraising solicitation. Check here <input type="checkbox"/> if following SOP 98-2 (ASC 958-720)				

Part X Balance Sheet

Check if Schedule O contains a response or note to any line in this Part X

		(A) Beginning of year		(B) End of year
Assets	1 Cash—non-interest-bearing	100	1	100
	2 Savings and temporary cash investments	825,263	2	1,063,608
	3 Pledges and grants receivable, net	101,366	3	120,969
	4 Accounts receivable, net	16,610	4	128,115
	5 Loans and other receivables from any current or former officer, director, trustee, key employee, creator or founder, substantial contributor, or 35% controlled entity or family member of any of these persons		5	
	6 Loans and other receivables from other disqualified persons (as defined under section 4958(f)(1)), and persons described in section 4958(c)(3)(B)		6	
	7 Notes and loans receivable, net		7	
	8 Inventories for sale or use		8	
	9 Prepaid expenses and deferred charges	178,308	9	237,796
	10a Land, buildings, and equipment: cost or other basis. Complete Part VI of Schedule D	10a 8,462,515		
	b Less: accumulated depreciation	10b 3,624,703	4,963,562	10c 4,837,812
	11 Investments—publicly traded securities		11	
	12 Investments—other securities. See Part IV, line 11	9,444,120	12	10,111,785
	13 Investments—program-related. See Part IV, line 11		13	
	14 Intangible assets		14	
	15 Other assets. See Part IV, line 11		15	
16 Total assets. Add lines 1 through 15 (must equal line 33)		15,529,329	16	16,500,185
Liabilities	17 Accounts payable and accrued expenses	72,114	17	74,450
	18 Grants payable		18	
	19 Deferred revenue		19	
	20 Tax-exempt bond liabilities		20	
	21 Escrow or custodial account liability. Complete Part IV of Schedule D		21	
	22 Loans and other payables to any current or former officer, director, trustee, key employee, creator or founder, substantial contributor, or 35% controlled entity or family member of any of these persons		22	
	23 Secured mortgages and notes payable to unrelated third parties		23	
	24 Unsecured notes and loans payable to unrelated third parties		24	
	25 Other liabilities (including federal income tax, payables to related third parties, and other liabilities not included on lines 17-24). Complete Part X of Schedule D	13,659	25	7,036
	26 Total liabilities. Add lines 17 through 25	85,773	26	81,486
Net Assets or Fund Balances	Organizations that follow FASB ASC 958, check here <input checked="" type="checkbox"/> and complete lines 27, 28, 32, and 33.			
	27 Net assets without donor restrictions	14,490,716	27	15,535,030
	28 Net assets with donor restrictions	952,840	28	883,669
	Organizations that do not follow FASB ASC 958, check here <input type="checkbox"/> and complete lines 29 through 33.			
	29 Capital stock or trust principal, or current funds		29	
	30 Paid-in or capital surplus, or land, building, or equipment fund		30	
	31 Retained earnings, endowment, accumulated income, or other funds		31	
32 Total net assets or fund balances	15,443,556	32	16,418,699	
33 Total liabilities and net assets/fund balances	15,529,329	33	16,500,185	

Part XI Reconciliation of Net Assets

Check if Schedule O contains a response or note to any line in this Part XI

1	Total revenue (must equal Part VIII, column (A), line 12)	1	2,433,371
2	Total expenses (must equal Part IX, column (A), line 25)	2	2,430,989
3	Revenue less expenses. Subtract line 2 from line 1	3	2,382
4	Net assets or fund balances at beginning of year (must equal Part X, line 32, column (A))	4	15,443,556
5	Net unrealized gains (losses) on investments	5	972,761
6	Donated services and use of facilities	6	
7	Investment expenses	7	
8	Prior period adjustments	8	
9	Other changes in net assets or fund balances (explain on Schedule O)	9	
10	Net assets or fund balances at end of year. Combine lines 3 through 9 (must equal Part X, line 32, column (B))	10	16,418,699

Part XII Financial Statements and Reporting

Check if Schedule O contains a response or note to any line in this Part XII

		Yes	No
1	Accounting method used to prepare the Form 990: <input type="checkbox"/> Cash <input checked="" type="checkbox"/> Accrual <input type="checkbox"/> Other If the organization changed its method of accounting from a prior year or checked "Other," explain on Schedule O.		
2a	Were the organization's financial statements compiled or reviewed by an independent accountant? If "Yes," check a box below to indicate whether the financial statements for the year were compiled or reviewed on a separate basis, consolidated basis, or both. <input type="checkbox"/> Separate basis <input type="checkbox"/> Consolidated basis <input type="checkbox"/> Both consolidated and separate basis		X
2b	Were the organization's financial statements audited by an independent accountant? If "Yes," check a box below to indicate whether the financial statements for the year were audited on a separate basis, consolidated basis, or both. <input checked="" type="checkbox"/> Separate basis <input type="checkbox"/> Consolidated basis <input type="checkbox"/> Both consolidated and separate basis	X	
2c	If "Yes" to line 2a or 2b, does the organization have a committee that assumes responsibility for oversight of the audit, review, or compilation of its financial statements and selection of an independent accountant? If the organization changed either its oversight process or selection process during the tax year, explain on Schedule O.	X	
3a	As a result of a federal award, was the organization required to undergo an audit or audits as set forth in the Uniform Guidance, 2 C.F.R. Part 200, Subpart F?		X
3b	If "Yes," did the organization undergo the required audit or audits? If the organization did not undergo the required audit or audits, explain why on Schedule O and describe any steps taken to undergo such audits		

Part VII Section A. Officers, Directors, Trustees, Key Employees, and Highest Compensated Employees (continued)

(A) Name and title	(B) Average hours per week per week (list any hours for related organizations below dotted line)	(C) Position (do not check more than one box, unless person is both an officer and a director/trustee)						(D) Reportable compensation from the organization (W-2/1099-MISC/1099-NEC)	(E) Reportable compensation from related organizations (W-2/1099-MISC/1099-NEC)	(F) Estimated amount of other compensation from the organization and related organizations
		Individual trustee or director	Institutional trustee	Officer	Key employee	Highest compensated employee	Former			
(20) KRISTEN QUINN	1.00									
DIRECTOR	0.00	X					0	0	0	
(21) JANE POTTER	1.00									
DIRECTOR	0.00	X					0	0	0	
(22) MICHAEL SCHIFTAN	1.00									
DIRECTOR	0.00	X					0	0	0	
(23) EMILY SMITH	2.00									
PRESIDENT-ELECT	0.00	X		X			0	0	0	
(24) ROBERT SMITH	2.00									
PRESIDENT	0.00	X		X			0	0	0	
(25) JALEEMA SPEAKS	1.00									
DIRECTOR	0.00	X					0	0	0	
(26) ELIZABETH SPIRES	1.00									
DIRECTOR	0.00	X					0	0	0	
(27) RON SUTPHIN, JR.	1.00									
DIRECTOR	0.00	X					0	0	0	
1b Subtotal										
c Total from continuation sheets to Part VII, Section A										
d Total (add lines 1b and 1c)										

2 Total number of individuals (including but not limited to those listed above) who received more than \$100,000 of reportable compensation from the organization

	Yes	No
3 Did the organization list any former officer, director, trustee, key employee, or highest compensated employee on line 1a? <i>If "Yes," complete Schedule J for such individual</i>	3	
4 For any individual listed on line 1a, is the sum of reportable compensation and other compensation from the organization and related organizations greater than \$150,000? <i>If "Yes," complete Schedule J for such individual</i>	4	
5 Did any person listed on line 1a receive or accrue compensation from any unrelated organization or individual for services rendered to the organization? <i>If "Yes," complete Schedule J for such person</i>	5	

Section B. Independent Contractors

1 Complete this table for your five highest compensated independent contractors that received more than \$100,000 of compensation from the organization. Report compensation for the calendar year ending with or within the organization's tax year.

(A) Name and business address	(B) Description of services	(C) Compensation

2 Total number of independent contractors (including but not limited to those listed above) who received more than \$100,000 of compensation from the organization

Part VII Section A. Officers, Directors, Trustees, Key Employees, and Highest Compensated Employees (continued)

(A) Name and title	(B) Average hours per week per week (list any hours for related organizations below dotted line)	(C) Position (do not check more than one box, unless person is both an officer and a director/trustee)						(D) Reportable compensation from the organization (W-2/ 1099-MISC/ 1099-NEC)	(E) Reportable compensation from related organizations (W-2/ 1099-MISC/ 1099-NEC)	(F) Estimated amount of other compensation from the organization and related organizations
		Individual trustee or director	Institutional trustee	Officer	Key employee	Highest compensated employee	Former			
(28) TAMIKA THRASHER										
(12) DIRECTOR	1.00 0.00	X					0	0	0	
(29) PATRICK TURNER										
(13) DIRECTOR	1.00 0.00	X					0	0	0	
(30) STEVE VALLOS										
(14) DIRECTOR	1.00 0.00	X					0	0	0	
(31) KIMBERLY ROBERTSON										
(15) DIRECTOR	1.00 0.00	X					0	0	0	
(16)										
(17)										
(18)										
(19)										
1b Subtotal										
c Total from continuation sheets to Part VII, Section A										
d Total (add lines 1b and 1c)										

2 Total number of individuals (including but not limited to those listed above) who received more than \$100,000 of reportable compensation from the organization

	Yes	No
3 Did the organization list any former officer, director, trustee, key employee, or highest compensated employee on line 1a? <i>If "Yes," complete Schedule J for such individual</i>		
4 For any individual listed on line 1a, is the sum of reportable compensation and other compensation from the organization and related organizations greater than \$150,000? <i>If "Yes," complete Schedule J for such individual</i>		
5 Did any person listed on line 1a receive or accrue compensation from any unrelated organization or individual for services rendered to the organization? <i>If "Yes," complete Schedule J for such person</i>		

Section B. Independent Contractors

1 Complete this table for your five highest compensated independent contractors that received more than \$100,000 of compensation from the organization. Report compensation for the calendar year ending with or within the organization's tax year.

(A) Name and business address	(B) Description of services	(C) Compensation

2 Total number of independent contractors (including but not limited to those listed above) who received more than \$100,000 of compensation from the organization

SCHEDULE A
(Form 990)

Department of the Treasury
Internal Revenue Service

Public Charity Status and Public Support

Complete if the organization is a section 501(c)(3) organization or a section 4947(a)(1) nonexempt charitable trust.

Attach to Form 990 or Form 990-EZ.

Go to www.irs.gov/Form990 for instructions and the latest information.

OMB No. 1545-0047

2023

Open to Public Inspection

Name of the organization **RONALD MCDONALD HOUSE CHARITIES OF THE PIEDMONT TRIAD, INC.** Employer identification number **58-1454715**

Part I Reason for Public Charity Status. (All organizations must complete this part.) See instructions.

The organization is not a private foundation because it is: (For lines 1 through 12, check only one box.)

- 1 A church, convention of churches, or association of churches described in **section 170(b)(1)(A)(i).**
- 2 A school described in **section 170(b)(1)(A)(ii).** (Attach Schedule E (Form 990).)
- 3 A hospital or a cooperative hospital service organization described in **section 170(b)(1)(A)(iii).**
- 4 A medical research organization operated in conjunction with a hospital described in **section 170(b)(1)(A)(iii).** Enter the hospital's name, city, and state:
- 5 An organization operated for the benefit of a college or university owned or operated by a governmental unit described in **section 170(b)(1)(A)(iv).** (Complete Part II.)
- 6 A federal, state, or local government or governmental unit described in **section 170(b)(1)(A)(v).**
- 7 An organization that normally receives a substantial part of its support from a governmental unit or from the general public described in **section 170(b)(1)(A)(vi).** (Complete Part II.)
- 8 A community trust described in **section 170(b)(1)(A)(vi).** (Complete Part II.)
- 9 An agricultural research organization described in **section 170(b)(1)(A)(ix)** operated in conjunction with a land-grant college or university or a non-land-grant college of agriculture (see instructions). Enter the name, city, and state of the college or university:
- 10 An organization that normally receives (1) more than 33 1/3% of its support from contributions, membership fees, and gross receipts from activities related to its exempt functions, subject to certain exceptions; and (2) no more than 33 1/3% of its support from gross investment income and unrelated business taxable income (less section 511 tax) from businesses acquired by the organization after June 30, 1975. See **section 509(a)(2).** (Complete Part III.)
- 11 An organization organized and operated exclusively to test for public safety. See **section 509(a)(4).**
- 12 An organization organized and operated exclusively for the benefit of, to perform the functions of, or to carry out the purposes of one or more publicly supported organizations described in **section 509(a)(1)** or **section 509(a)(2).** See **section 509(a)(3).** Check the box on lines 12a through 12d that describes the type of supporting organization and complete lines 12e, 12f, and 12g.
 - a **Type I.** A supporting organization operated, supervised, or controlled by its supported organization(s), typically by giving the supported organization(s) the power to regularly appoint or elect a majority of the directors or trustees of the supporting organization. **You must complete Part IV, Sections A and B.**
 - b **Type II.** A supporting organization supervised or controlled in connection with its supported organization(s), by having control or management of the supporting organization vested in the same persons that control or manage the supported organization(s). **You must complete Part IV, Sections A and C.**
 - c **Type III functionally integrated.** A supporting organization operated in connection with, and functionally integrated with, its supported organization(s) (see instructions). **You must complete Part IV, Sections A, D, and E.**
 - d **Type III non-functionally integrated.** A supporting organization operated in connection with its supported organization(s) that is not functionally integrated. The organization generally must satisfy a distribution requirement and an attentiveness requirement (see instructions). **You must complete Part IV, Sections A and D, and Part V.**
 - e Check this box if the organization received a written determination from the IRS that it is a Type I, Type II, Type III functionally integrated, or Type III non-functionally integrated supporting organization.
 - f Enter the number of supported organizations
 - g Provide the following information about the supported organization(s).

(i) Name of supported organization	(ii) EIN	(iii) Type of organization (described on lines 1-10 above (see instructions))	(iv) Is the organization listed in your governing document?		(v) Amount of monetary support (see instructions)	(vi) Amount of other support (see instructions)
			Yes	No		
(A)						
(B)						
(C)						
(D)						
(E)						
Total						

Part II Support Schedule for Organizations Described in Sections 170(b)(1)(A)(iv) and 170(b)(1)(A)(vi)

(Complete only if you checked the box on line 5, 7, or 8 of Part I or if the organization failed to qualify under Part III. If the organization fails to qualify under the tests listed below, please complete Part III.)

Section A. Public Support

Calendar year (or fiscal year beginning in)	(a) 2019	(b) 2020	(c) 2021	(d) 2022	(e) 2023	(f) Total
1 Gifts, grants, contributions, and membership fees received. (Do not include any "unusual grants.")	1,391,971	2,126,841	1,809,085	1,773,932	2,112,127	9,213,956
2 Tax revenues levied for the organization's benefit and either paid to or expended on its behalf						
3 The value of services or facilities furnished by a governmental unit to the organization without charge						
4 Total. Add lines 1 through 3	1,391,971	2,126,841	1,809,085	1,773,932	2,112,127	9,213,956
5 The portion of total contributions by each person (other than a governmental unit or publicly supported organization) included on line 1 that exceeds 2% of the amount shown on line 11, column (f)						744,383
6 Public support. Subtract line 5 from line 4						8,469,573

Section B. Total Support

Calendar year (or fiscal year beginning in)	(a) 2019	(b) 2020	(c) 2021	(d) 2022	(e) 2023	(f) Total
7 Amounts from line 4	1,391,971	2,126,841	1,809,085	1,773,932	2,112,127	9,213,956
8 Gross income from interest, dividends, payments received on securities loans, rents, royalties, and income from similar sources	117,122	106,902	115,002	64,423	118,295	521,744
9 Net income from unrelated business activities, whether or not the business is regularly carried on						
10 Other income. Do not include gain or loss from the sale of capital assets (Explain in Part VI.)			2,730			2,730
11 Total support. Add lines 7 through 10						9,738,430
12 Gross receipts from related activities, etc. (see instructions)					12	922,792
13 First 5 years. If the Form 990 is for the organization's first, second, third, fourth, or fifth tax year as a section 501(c)(3) organization, check this box and stop here						<input type="checkbox"/>

Section C. Computation of Public Support Percentage

14 Public support percentage for 2023 (line 6, column (f) divided by line 11, column (f))	14	86.97 %
15 Public support percentage from 2022 Schedule A, Part II, line 14	15	88.24 %
16a 33 1/3% support test — 2023. If the organization did not check the box on line 13, and line 14 is 33 1/3% or more, check this box and stop here. The organization qualifies as a publicly supported organization	<input checked="" type="checkbox"/>	
b 33 1/3% support test — 2022. If the organization did not check a box on line 13 or 16a, and line 15 is 33 1/3% or more, check this box and stop here. The organization qualifies as a publicly supported organization	<input type="checkbox"/>	
17a 10%-facts-and-circumstances test — 2023. If the organization did not check a box on line 13, 16a, or 16b, and line 14 is 10% or more, and if the organization meets the facts-and-circumstances test, check this box and stop here. Explain in Part VI how the organization meets the facts-and-circumstances test. The organization qualifies as a publicly supported organization	<input type="checkbox"/>	
b 10%-facts-and-circumstances test — 2022. If the organization did not check a box on line 13, 16a, 16b, or 17a, and line 15 is 10% or more, and if the organization meets the facts-and-circumstances test, check this box and stop here. Explain in Part VI how the organization meets the facts-and-circumstances test. The organization qualifies as a publicly supported organization	<input type="checkbox"/>	
18 Private foundation. If the organization did not check a box on line 13, 16a, 16b, 17a, or 17b, check this box and see instructions	<input type="checkbox"/>	

Part III Support Schedule for Organizations Described in Section 509(a)(2)

(Complete only if you checked the box on line 10 of Part I or if the organization failed to qualify under Part II. If the organization fails to qualify under the tests listed below, please complete Part II.)

Section A. Public Support

Table with 7 columns: (a) 2019, (b) 2020, (c) 2021, (d) 2022, (e) 2023, (f) Total. Rows include: 1 Gifts, grants, contributions, and membership fees received; 2 Gross receipts from admissions, merchandise sold or services performed; 3 Gross receipts from activities that are not an unrelated trade or business; 4 Tax revenues levied for the organization's benefit; 5 The value of services or facilities furnished by a governmental unit; 6 Total. Add lines 1 through 5; 7a Amounts included on lines 1, 2, and 3 received from disqualified persons; 7b Amounts included on lines 2 and 3 received from other than disqualified persons; 7c Add lines 7a and 7b; 8 Public support. (Subtract line 7c from line 6.)

Section B. Total Support

Table with 7 columns: (a) 2019, (b) 2020, (c) 2021, (d) 2022, (e) 2023, (f) Total. Rows include: 9 Amounts from line 6; 10a Gross income from interest, dividends, payments received on securities loans, rents, royalties, and income from similar sources; 10b Unrelated business taxable income (less section 511 taxes) from businesses acquired after June 30, 1975; 10c Add lines 10a and 10b; 11 Net income from unrelated business activities not included on line 10b; 12 Other income. Do not include gain or loss from the sale of capital assets; 13 Total support. (Add lines 9, 10c, 11, and 12.)

14 First 5 years. If the Form 990 is for the organization's first, second, third, fourth, or fifth tax year as a section 501(c)(3) organization, check this box and stop here

Section C. Computation of Public Support Percentage

Table with 2 columns: Line number, Percentage. Row 15: Public support percentage for 2023 (line 8, column (f), divided by line 13, column (f)) 15 %; Row 16: Public support percentage from 2022 Schedule A, Part III, line 15 16 %

Section D. Computation of Investment Income Percentage

Table with 2 columns: Line number, Percentage. Row 17: Investment income percentage for 2023 (line 10c, column (f), divided by line 13, column (f)) 17 %; Row 18: Investment income percentage from 2022 Schedule A, Part III, line 17 18 %

19a 33 1/3% support tests — 2023. If the organization did not check the box on line 14, and line 15 is more than 33 1/3%, and line 17 is not more than 33 1/3%, check this box and stop here. The organization qualifies as a publicly supported organization

b 33 1/3% support tests — 2022. If the organization did not check a box on line 14 or line 19a, and line 16 is more than 33 1/3%, and line 18 is not more than 33 1/3%, check this box and stop here. The organization qualifies as a publicly supported organization

20 Private foundation. If the organization did not check a box on line 14, 19a, or 19b, check this box and see instructions

Part IV Supporting Organizations

(Complete only if you checked a box on line 12 on Part I. If you checked box 12a, Part I, complete Sections A and B. If you checked box 12b, Part I, complete Sections A and C. If you checked box 12c, Part I, complete Sections A, D, and E. If you checked box 12d, Part I, complete Sections A and D, and complete Part V.)

Section A. All Supporting Organizations

- 1 Are all of the organization's supported organizations listed by name in the organization's governing documents? *If "No," describe in Part VI how the supported organizations are designated. If designated by class or purpose, describe the designation. If historic and continuing relationship, explain.*
- 2 Did the organization have any supported organization that does not have an IRS determination of status under section 509(a)(1) or (2)? *If "Yes," explain in Part VI how the organization determined that the supported organization was described in section 509(a)(1) or (2).*
- 3a Did the organization have a supported organization described in section 501(c)(4), (5), or (6)? *If "Yes," answer lines 3b and 3c below.*
- b Did the organization confirm that each supported organization qualified under section 501(c)(4), (5), or (6) and satisfied the public support tests under section 509(a)(2)? *If "Yes," describe in Part VI when and how the organization made the determination.*
- c Did the organization ensure that all support to such organizations was used exclusively for section 170(c)(2)(B) purposes? *If "Yes," explain in Part VI what controls the organization put in place to ensure such use.*
- 4a Was any supported organization not organized in the United States ("foreign supported organization")? *If "Yes," and if you checked box 12a or 12b in Part I, answer lines 4b and 4c below.*
- b Did the organization have ultimate control and discretion in deciding whether to make grants to the foreign supported organization? *If "Yes," describe in Part VI how the organization had such control and discretion despite being controlled or supervised by or in connection with its supported organizations.*
- c Did the organization support any foreign supported organization that does not have an IRS determination under sections 501(c)(3) and 509(a)(1) or (2)? *If "Yes," explain in Part VI what controls the organization used to ensure that all support to the foreign supported organization was used exclusively for section 170(c)(2)(B) purposes.*
- 5a Did the organization add, substitute, or remove any supported organizations during the tax year? *If "Yes," answer lines 5b and 5c below (if applicable). Also, provide detail in Part VI, including (i) the names and EIN numbers of the supported organizations added, substituted, or removed; (ii) the reasons for each such action; (iii) the authority under the organization's organizing document authorizing such action; and (iv) how the action was accomplished (such as by amendment to the organizing document).*
- b **Type I or Type II only.** Was any added or substituted supported organization part of a class already designated in the organization's organizing document?
- c **Substitutions only.** Was the substitution the result of an event beyond the organization's control?
- 6 Did the organization provide support (whether in the form of grants or the provision of services or facilities) to anyone other than (i) its supported organizations, (ii) individuals that are part of the charitable class benefited by one or more of its supported organizations, or (iii) other supporting organizations that also support or benefit one or more of the filing organization's supported organizations? *If "Yes," provide detail in Part VI.*
- 7 Did the organization provide a grant, loan, compensation, or other similar payment to a substantial contributor (as defined in section 4958(c)(3)(C)), a family member of a substantial contributor, or a 35% controlled entity with regard to a substantial contributor? *If "Yes," complete Part I of Schedule L (Form 990).*
- 8 Did the organization make a loan to a disqualified person (as defined in section 4958) not described on line 7? *If "Yes," complete Part I of Schedule L (Form 990).*
- 9a Was the organization controlled directly or indirectly at any time during the tax year by one or more disqualified persons, as defined in section 4946 (other than foundation managers and organizations described in section 509(a)(1) or (2))? *If "Yes," provide detail in Part VI.*
- b Did one or more disqualified persons (as defined on line 9a) hold a controlling interest in any entity in which the supporting organization had an interest? *If "Yes," provide detail in Part VI.*
- c Did a disqualified person (as defined on line 9a) have an ownership interest in, or derive any personal benefit from, assets in which the supporting organization also had an interest? *If "Yes," provide detail in Part VI.*
- 10a Was the organization subject to the excess business holdings rules of section 4943 because of section 4943(f) (regarding certain Type II supporting organizations, and all Type III non-functionally integrated supporting organizations)? *If "Yes," answer line 10b below.*
- b Did the organization have any excess business holdings in the tax year? *(Use Schedule C, Form 4720, to determine whether the organization had excess business holdings.)*

	Yes	No
1		
2		
3a		
3b		
3c		
4a		
4b		
4c		
5a		
5b		
5c		
6		
7		
8		
9a		
9b		
9c		
10a		
10b		

Part IV Supporting Organizations (continued)

- 11** Has the organization accepted a gift or contribution from any of the following persons?
- a** A person who directly or indirectly controls, either alone or together with persons described on lines 11b and 11c below, the governing body of a supported organization?
 - b** A family member of a person described on line 11a above?
 - c** A 35% controlled entity of a person described on line 11a or 11b above? *If "Yes" to line 11a, 11b, or 11c, provide detail in Part VI.*

	Yes	No
11a		
11b		
11c		

Section B. Type I Supporting Organizations

- 1** Did the governing body, members of the governing body, officers acting in their official capacity, or membership of one or more supported organizations have the power to regularly appoint or elect at least a majority of the organization's officers, directors, or trustees at all times during the tax year? *If "No," describe in Part VI how the supported organization(s) effectively operated, supervised, or controlled the organization's activities. If the organization had more than one supported organization, describe how the powers to appoint and/or remove officers, directors, or trustees were allocated among the supported organizations and what conditions or restrictions, if any, applied to such powers during the tax year.*
- 2** Did the organization operate for the benefit of any supported organization other than the supported organization(s) that operated, supervised, or controlled the supporting organization? *If "Yes," explain in Part VI how providing such benefit carried out the purposes of the supported organization(s) that operated, supervised, or controlled the supporting organization.*

	Yes	No
1		
2		

Section C. Type II Supporting Organizations

- 1** Were a majority of the organization's directors or trustees during the tax year also a majority of the directors or trustees of each of the organization's supported organization(s)? *If "No," describe in Part VI how control or management of the supporting organization was vested in the same persons that controlled or managed the supported organization(s).*

	Yes	No
1		

Section D. All Type III Supporting Organizations

- 1** Did the organization provide to each of its supported organizations, by the last day of the fifth month of the organization's tax year, (i) a written notice describing the type and amount of support provided during the prior tax year, (ii) a copy of the Form 990 that was most recently filed as of the date of notification, and (iii) copies of the organization's governing documents in effect on the date of notification, to the extent not previously provided?
- 2** Were any of the organization's officers, directors, or trustees either (i) appointed or elected by the supported organization(s) or (ii) serving on the governing body of a supported organization? *If "No," explain in Part VI how the organization maintained a close and continuous working relationship with the supported organization(s).*
- 3** By reason of the relationship described on line 2, above, did the organization's supported organizations have a significant voice in the organization's investment policies and in directing the use of the organization's income or assets at all times during the tax year? *If "Yes," describe in Part VI the role the organization's supported organizations played in this regard.*

	Yes	No
1		
2		
3		

Section E. Type III Functionally Integrated Supporting Organizations

- 1** Check the box next to the method that the organization used to satisfy the Integral Part Test during the year (see instructions).
 - a** The organization satisfied the Activities Test. *Complete line 2 below.*
 - b** The organization is the parent of each of its supported organizations. *Complete line 3 below.*
 - c** The organization supported a governmental entity. *Describe in Part VI how you supported a governmental entity (see instructions).*
- 2** Activities Test. *Answer lines 2a and 2b below.*
 - a** Did substantially all of the organization's activities during the tax year directly further the exempt purposes of the supported organization(s) to which the organization was responsive? *If "Yes," then in Part VI identify those supported organizations and explain how these activities directly furthered their exempt purposes, how the organization was responsive to those supported organizations, and how the organization determined that these activities constituted substantially all of its activities.*
 - b** Did the activities described on line 2a, above, constitute activities that, but for the organization's involvement, one or more of the organization's supported organization(s) would have been engaged in? *If "Yes," explain in Part VI the reasons for the organization's position that its supported organization(s) would have engaged in these activities but for the organization's involvement.*
- 3** Parent of Supported Organizations. *Answer lines 3a and 3b below.*
 - a** Did the organization have the power to regularly appoint or elect a majority of the officers, directors, or trustees of each of the supported organizations? *If "Yes" or "No," provide details in Part VI.*
 - b** Did the organization exercise a substantial degree of direction over the policies, programs, and activities of each of its supported organizations? *If "Yes," describe in Part VI the role played by the organization in this regard.*

	Yes	No
2a		
2b		
3a		
3b		

Part V Type III Non-Functionally Integrated 509(a)(3) Supporting Organizations

1 Check here if the organization satisfied the Integral Part Test as a qualifying trust on Nov. 20, 1970 (explain in Part VI). See instructions. All other Type III non-functionally integrated supporting organizations must complete Sections A through E.

Section A – Adjusted Net Income		(A) Prior Year	(B) Current Year (optional)
1	Net short-term capital gain	1	
2	Recoveries of prior-year distributions	2	
3	Other gross income (see instructions)	3	
4	Add lines 1 through 3.	4	
5	Depreciation and depletion	5	
6	Portion of operating expenses paid or incurred for production or collection of gross income or for management, conservation, or maintenance of property held for production of income (see instructions)	6	
7	Other expenses (see instructions)	7	
8	Adjusted Net Income (subtract lines 5, 6, and 7 from line 4)	8	
Section B – Minimum Asset Amount		(A) Prior Year	(B) Current Year (optional)
1	Aggregate fair market value of all non-exempt-use assets (see instructions for short tax year or assets held for part of year):		
a	Average monthly value of securities	1a	
b	Average monthly cash balances	1b	
c	Fair market value of other non-exempt-use assets	1c	
d	Total (add lines 1a, 1b, and 1c)	1d	
e	Discount claimed for blockage or other factors (explain in detail in Part VI):		
2	Acquisition indebtedness applicable to non-exempt-use assets	2	
3	Subtract line 2 from line 1d.	3	
4	Cash deemed held for exempt use. Enter 0.015 of line 3 (for greater amount, see instructions).	4	
5	Net value of non-exempt-use assets (subtract line 4 from line 3)	5	
6	Multiply line 5 by 0.035.	6	
7	Recoveries of prior-year distributions	7	
8	Minimum Asset Amount (add line 7 to line 6)	8	
Section C – Distributable Amount			Current Year
1	Adjusted net income for prior year (from Section A, line 8, column A)	1	
2	Enter 0.85 of line 1.	2	
3	Minimum asset amount for prior year (from Section B, line 8, column A)	3	
4	Enter greater of line 2 or line 3.	4	
5	Income tax imposed in prior year	5	
6	Distributable Amount. Subtract line 5 from line 4, unless subject to emergency temporary reduction (see instructions).	6	
7	<input type="checkbox"/> Check here if the current year is the organization's first as a non-functionally integrated Type III supporting organization (see instructions).		

Part V Type III Non-Functionally Integrated 509(a)(3) Supporting Organizations (continued)

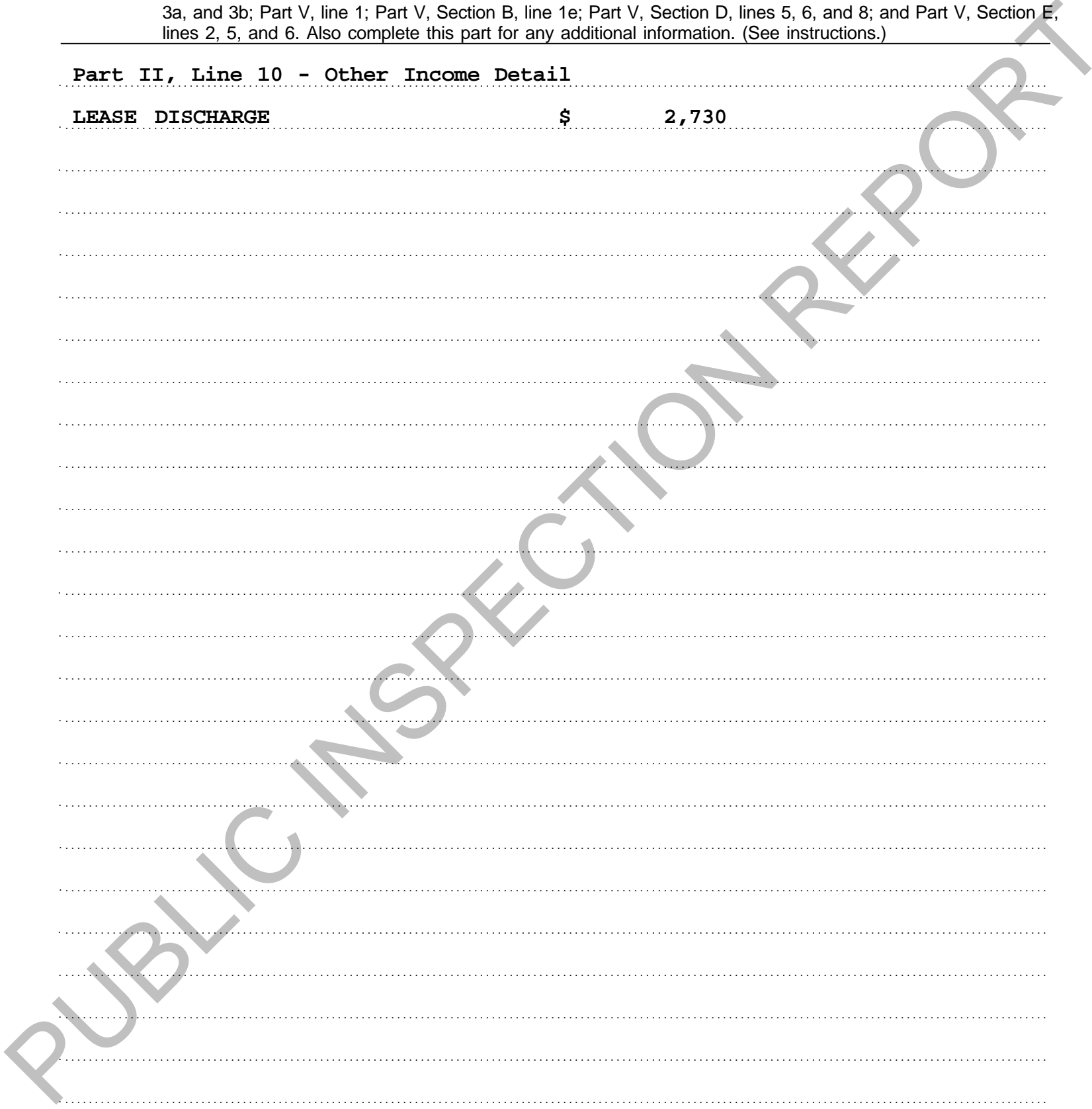
Section D – Distributions		Current Year
1	Amounts paid to supported organizations to accomplish exempt purposes	1
2	Amounts paid to perform activity that directly furthers exempt purposes of supported organizations, in excess of income from activity	2
3	Administrative expenses paid to accomplish exempt purposes of supported organizations	3
4	Amounts paid to acquire exempt-use assets	4
5	Qualified set-aside amounts (prior IRS approval required—provide details in Part VI)	5
6	Other distributions (describe in Part VI). See instructions.	6
7	Total annual distributions. Add lines 1 through 6.	7
8	Distributions to attentive supported organizations to which the organization is responsive (provide details in Part VI). See instructions.	8
9	Distributable amount for 2022 from Section C, line 6	9
10	Line 8 amount divided by line 9 amount	10

Section E – Distribution Allocations (see instructions)	(i) Excess Distributions	(ii) Underdistributions Pre-2023	(iii) Distributable Amount for 2023
1	Distributable amount for 2023 from Section C, line 6		
2	Underdistributions, if any, for years prior to 2023 (reasonable cause required—explain in Part VI). See instructions.		
3	Excess distributions carryover, if any, to 2023		
a	From 2018		
b	From 2019		
c	From 2020		
d	From 2021		
e	From 2022		
f	Total of lines 3a through 3e		
g	Applied to underdistributions of prior years		
h	Applied to 2023 distributable amount		
i	Carryover from 2018 not applied (see instructions)		
j	Remainder. Subtract lines 3g, 3h, and 3i from line 3f.		
4	Distributions for 2023 from Section D, line 7: \$		
a	Applied to underdistributions of prior years		
b	Applied to 2023 distributable amount		
c	Remainder. Subtract lines 4a and 4b from line 4.		
5	Remaining underdistributions for years prior to 2023, if any. Subtract lines 3g and 4a from line 2. For result greater than zero, explain in Part VI. See instructions.		
6	Remaining underdistributions for 2023. Subtract lines 3h and 4b from line 1. For result greater than zero, explain in Part VI. See instructions.		
7	Excess distributions carryover to 2024. Add lines 3j and 4c.		
8	Breakdown of line 7:		
a	Excess from 2019		
b	Excess from 2020		
c	Excess from 2021		
d	Excess from 2022		
e	Excess from 2023		

Part VI Supplemental Information. Provide the explanations required by Part II, line 10; Part II, line 17a or 17b; Part III, line 12; Part IV, Section A, lines 1, 2, 3b, 3c, 4b, 4c, 5a, 6, 9a, 9b, 9c, 11a, 11b, and 11c; Part IV, Section B, lines 1 and 2; Part IV, Section C, line 1; Part IV, Section D, lines 2 and 3; Part IV, Section E, lines 1c, 2a, 2b, 3a, and 3b; Part V, line 1; Part V, Section B, line 1e; Part V, Section D, lines 5, 6, and 8; and Part V, Section E, lines 2, 5, and 6. Also complete this part for any additional information. (See instructions.)

Part II, Line 10 - Other Income Detail

LEASE DISCHARGE \$ 2,730



Schedule B (Form 990)

Department of the Treasury Internal Revenue Service

Schedule of Contributors

Attach to Form 990, 990-EZ, or 990-PF. Go to www.irs.gov/Form990 for the latest information.

OMB No. 1545-0047

2023

Name of the organization: RONALD MCDONALD HOUSE CHARITIES OF THE PIEDMONT TRIAD, INC. Employer identification number: 58-1454715

Organization type (check one):

- Filers of: Form 990 or 990-EZ Section: [X] 501(c)(3) (enter number) organization [] 4947(a)(1) nonexempt charitable trust not treated as a private foundation [] 527 political organization Form 990-PF [] 501(c)(3) exempt private foundation [] 4947(a)(1) nonexempt charitable trust treated as a private foundation [] 501(c)(3) taxable private foundation

Check if your organization is covered by the General Rule or a Special Rule.

Note: Only a section 501(c)(7), (8), or (10) organization can check boxes for both the General Rule and a Special Rule. See instructions.

General Rule

- [] For an organization filing Form 990, 990-EZ, or 990-PF that received, during the year, contributions totaling \$5,000 or more (in money or property) from any one contributor. Complete Parts I and II. See instructions for determining a contributor's total contributions.

Special Rules

- [X] For an organization described in section 501(c)(3) filing Form 990 or 990-EZ that met the 33 1/3% support test of the regulations under sections 509(a)(1) and 170(b)(1)(A)(vi), that checked Schedule A (Form 990), Part II, line 13, 16a, or 16b, and that received from any one contributor, during the year, total contributions of the greater of (1) \$5,000; or (2) 2% of the amount on (i) Form 990, Part VIII, line 1h; or (ii) Form 990-EZ, line 1. Complete Parts I and II. [] For an organization described in section 501(c)(7), (8), or (10) filing Form 990 or 990-EZ that received from any one contributor, during the year, total contributions of more than \$1,000 exclusively for religious, charitable, scientific, literary, or educational purposes, or for the prevention of cruelty to children or animals. Complete Parts I (entering "N/A" in column (b) instead of the contributor name and address), II, and III. [] For an organization described in section 501(c)(7), (8), or (10) filing Form 990 or 990-EZ that received from any one contributor, during the year, contributions exclusively for religious, charitable, etc., purposes, but no such contributions totaled more than \$1,000. If this box is checked, enter here the total contributions that were received during the year for an exclusively religious, charitable, etc., purpose. Don't complete any of the parts unless the General Rule applies to this organization because it received nonexclusively religious, charitable, etc., contributions totaling \$5,000 or more during the year \$

Caution: An organization that isn't covered by the General Rule and/or the Special Rules doesn't file Schedule B (Form 990), but it must answer "No" on Part IV, line 2, of its Form 990; or check the box on line H of its Form 990-EZ or on its Form 990-PF, Part I, line 2, to certify that it doesn't meet the filing requirements of Schedule B (Form 990).

For Paperwork Reduction Act Notice, see the instructions for Form 990, 990-EZ, or 990-PF.

Schedule B (Form 990) (2023)

Name of organization

Employer identification number

RONALD MCDONALD HOUSE CHARITIES

58-1454715

Part I Contributors (see instructions). Use duplicate copies of Part I if additional space is needed.

(a) No.	(b) Name, address, and ZIP + 4	(c) Total contributions	(d) Type of contribution
1	\$ 330,097	Person <input checked="" type="checkbox"/> Payroll <input type="checkbox"/> Noncash <input type="checkbox"/> (Complete Part II for noncash contributions.)
2	\$ 193,500	Person <input checked="" type="checkbox"/> Payroll <input type="checkbox"/> Noncash <input type="checkbox"/> (Complete Part II for noncash contributions.)
3	\$ 98,745	Person <input checked="" type="checkbox"/> Payroll <input type="checkbox"/> Noncash <input type="checkbox"/> (Complete Part II for noncash contributions.)
4	\$ 70,543	Person <input checked="" type="checkbox"/> Payroll <input type="checkbox"/> Noncash <input type="checkbox"/> (Complete Part II for noncash contributions.)
.....	\$	Person <input type="checkbox"/> Payroll <input type="checkbox"/> Noncash <input type="checkbox"/> (Complete Part II for noncash contributions.)
.....	\$	Person <input type="checkbox"/> Payroll <input type="checkbox"/> Noncash <input type="checkbox"/> (Complete Part II for noncash contributions.)

SCHEDULE D (Form 990)

Department of the Treasury Internal Revenue Service

Supplemental Financial Statements

Complete if the organization answered "Yes" on Form 990, Part IV, line 6, 7, 8, 9, 10, 11a, 11b, 11c, 11d, 11e, 11f, 12a, or 12b.

Attach to Form 990.

Go to www.irs.gov/Form990 for instructions and the latest information.

OMB No. 1545-0047

2023

Open to Public Inspection

Name of the organization

RONALD MCDONALD HOUSE CHARITIES OF THE PIEDMONT TRIAD, INC.

Employer identification number

58-1454715

Part I Organizations Maintaining Donor Advised Funds or Other Similar Funds or Accounts

Complete if the organization answered "Yes" on Form 990, Part IV, line 6.

Table with 2 columns: (a) Donor advised funds, (b) Funds and other accounts. Rows include: 1 Total number at end of year, 2 Aggregate value of contributions to (during year), 3 Aggregate value of grants from (during year), 4 Aggregate value at end of year, 5 Did the organization inform all donors...?, 6 Did the organization inform all grantees...?

Part II Conservation Easements

Complete if the organization answered "Yes" on Form 990, Part IV, line 7.

Table with 2 columns: Description, Held at the End of the Tax Year. Rows include: 1 Purpose(s) of conservation easements, 2 Complete lines 2a through 2d if the organization held a qualified conservation contribution..., 3 Number of conservation easements modified..., 4 Number of states where property subject..., 5 Does the organization have a written policy..., 6 Staff and volunteer hours..., 7 Amount of expenses..., 8 Does each conservation easement..., 9 In Part XIII, describe how the organization reports...

Part III Organizations Maintaining Collections of Art, Historical Treasures, or Other Similar Assets

Complete if the organization answered "Yes" on Form 990, Part IV, line 8.

Table with 2 columns: Description, Amount. Rows include: 1a If the organization elected, as permitted under FASB ASC 958, not to report..., 1b If the organization elected, as permitted under FASB ASC 958, to report..., 2 If the organization received or held works of art, historical treasures, or other similar assets for financial gain...

Part III Organizations Maintaining Collections of Art, Historical Treasures, or Other Similar Assets (continued)

- 3 Using the organization's acquisition, accession, and other records, check any of the following that make significant use of its collection items (check all that apply).
- a Public exhibition
 - b Scholarly research
 - c Preservation for future generations
 - d Loan or exchange program
 - e Other
- 4 Provide a description of the organization's collections and explain how they further the organization's exempt purpose in Part XIII.
- 5 During the year, did the organization solicit or receive donations of art, historical treasures, or other similar assets to be sold to raise funds rather than to be maintained as part of the organization's collection? Yes No

Part IV Escrow and Custodial Arrangements

Complete if the organization answered "Yes" on Form 990, Part IV, line 9, or reported an amount on Form 990, Part X, line 21.

- 1a Is the organization an agent, trustee, custodian or other intermediary for contributions or other assets not included on Form 990, Part X? Yes No
- b If "Yes," explain the arrangement in Part XIII and complete the following table.
- | | Amount |
|---------------------------------------|--------|
| c Beginning balance | 1c |
| d Additions during the year | 1d |
| e Distributions during the year | 1e |
| f Ending balance | 1f |
- 2a Did the organization include an amount on Form 990, Part X, line 21, for escrow or custodial account liability? Yes No
- b If "Yes," explain the arrangement in Part XIII. Check here if the explanation has been provided on Part XIII Yes No

Part V Endowment Funds

Complete if the organization answered "Yes" on Form 990, Part IV, line 10.

	(a) Current year	(b) Prior year	(c) Two years back	(d) Three years back	(e) Four years back
1a Beginning of year balance	4,063,474	4,540,822	4,037,754	3,854,348	3,488,822
b Contributions					
c Net investment earnings, gains, and losses	351,029	-443,119	587,672	213,740	395,493
d Grants or scholarships					
e Other expenditures for facilities and programs	214,926		50,000		
f Administrative expenses	33,008	34,229	34,604	30,334	29,967
g End of year balance	4,166,569	4,063,474	4,540,822	4,037,754	3,854,348

- 2 Provide the estimated percentage of the current year end balance (line 1g, column (a)) held as:
- a Board designated or quasi-endowment **88.24 %**
 - b Permanent endowment **11.76 %**
 - c Term endowment %
- The percentages on lines 2a, 2b, and 2c should equal 100%.
- 3a Are there endowment funds not in the possession of the organization that are held and administered for the organization by:
- | | Yes | No |
|--|----------|----------|
| (i) Unrelated organizations? | X | |
| (ii) Related organizations? | | X |
| b If "Yes" on line 3a(ii), are the related organizations listed as required on Schedule R? | | |
- 3b
- 4 Describe in Part XIII the intended uses of the organization's endowment funds.

Part VI Land, Buildings, and Equipment

Complete if the organization answered "Yes" on Form 990, Part IV, line 11a. See Form 990, Part X, line 10.

Description of property	(a) Cost or other basis (investment)	(b) Cost or other basis (other)	(c) Accumulated depreciation	(d) Book value
1a Land		813,897		813,897
b Buildings		5,179,912	2,485,337	2,694,575
c Leasehold improvements		469,905	132,125	337,780
d Equipment		1,227,621	814,059	413,562
e Other		771,180	193,182	577,998

Total. Add lines 1a through 1e. (Column (d) must equal Form 990, Part X, line 10c, column (B)) **4,837,812**

Part VII Investments – Other Securities

Complete if the organization answered "Yes" on Form 990, Part IV, line 11b. See Form 990, Part X, line 12.

(a) Description of security or category (including name of security)	(b) Book value	(c) Method of valuation: Cost or end-of-year market value
(1) Financial derivatives		
(2) Closely held equity interests		
(3) Other STEVENS, INC	6,259,949	Market
(A) WINSTON-SALEM FOUNDATION	3,339,036	Market
(B) WINSTON-SALEM FOUNDATION - MWP	337,533	Market
(C) AMERIPRISE FINANCIAL	175,267	Market
(D)		
(E)		
(F)		
(G)		
(H)		
Total. (Column (b) must equal Form 990, Part X, line 12, col. (B))	10,111,785	

Part VIII Investments – Program Related

Complete if the organization answered "Yes" on Form 990, Part IV, line 11c. See Form 990, Part X, line 13.

(a) Description of investment	(b) Book value	(c) Method of valuation: Cost or end-of-year market value
(1)		
(2)		
(3)		
(4)		
(5)		
(6)		
(7)		
(8)		
(9)		
Total. (Column (b) must equal Form 990, Part X, line 13, col. (B))		

Part IX Other Assets

Complete if the organization answered "Yes" on Form 990, Part IV, line 11d. See Form 990, Part X, line 15.

(a) Description	(b) Book value
(1)	
(2)	
(3)	
(4)	
(5)	
(6)	
(7)	
(8)	
(9)	
Total. (Column (b) must equal Form 990, Part X, line 15, col. (B))	

Part X Other Liabilities

Complete if the organization answered "Yes" on Form 990, Part IV, line 11e or 11f. See Form 990, Part X, line 25.

1. (a) Description of liability	(b) Book value
(1) Federal income taxes	
(2) CAPITAL LEASE OBLIGATION	7,036
(3)	
(4)	
(5)	
(6)	
(7)	
(8)	
(9)	
Total. (Column (b) must equal Form 990, Part X, line 25, col. (B))	7,036

2. Liability for uncertain tax positions. In Part XIII, provide the text of the footnote to the organization's financial statements that reports the organization's liability for uncertain tax positions under FASB ASC 740. Check here if the text of the footnote has been provided in Part XIII

Part XI Reconciliation of Revenue per Audited Financial Statements With Revenue per Return

Complete if the organization answered "Yes" on Form 990, Part IV, line 12a.

1	Total revenue, gains, and other support per audited financial statements		1	3,445,577
2	Amounts included on line 1 but not on Form 990, Part VIII, line 12:			
a	Net unrealized gains (losses) on investments	2a	972,761	
b	Donated services and use of facilities	2b	18,530	
c	Recoveries of prior year grants	2c		
d	Other (Describe in Part XIII.)	2d	7,136	
e	Add lines 2a through 2d	2e	998,427	
3	Subtract line 2e from line 1	3	2,447,150	
4	Amounts included on Form 990, Part VIII, line 12, but not on line 1:			
a	Investment expenses not included on Form 990, Part VIII, line 7b	4a	94,541	
b	Other (Describe in Part XIII.)	4b	-108,320	
c	Add lines 4a and 4b	4c	-13,779	
5	Total revenue. Add lines 3 and 4c. (This must equal Form 990, Part I, line 12.)	5	2,433,371	

Part XII Reconciliation of Expenses per Audited Financial Statements With Expenses per Return

Complete if the organization answered "Yes" on Form 990, Part IV, line 12a.

1	Total expenses and losses per audited financial statements		1	2,470,434
2	Amounts included on line 1 but not on Form 990, Part IX, line 25:			
a	Donated services and use of facilities	2a	18,530	
b	Prior year adjustments	2b		
c	Other losses	2c		
d	Other (Describe in Part XIII.)	2d	7,136	
e	Add lines 2a through 2d	2e	25,666	
3	Subtract line 2e from line 1	3	2,444,768	
4	Amounts included on Form 990, Part IX, line 25, but not on line 1:			
a	Investment expenses not included on Form 990, Part VIII, line 7b	4a	94,541	
b	Other (Describe in Part XIII.)	4b	-108,320	
c	Add lines 4a and 4b	4c	-13,779	
5	Total expenses. Add lines 3 and 4c. (This must equal Form 990, Part I, line 18.)	5	2,430,989	

Part XIII Supplemental Information

Provide the descriptions required for Part II, lines 3, 5, and 9; Part III, lines 1a and 4; Part IV, lines 1b and 2b; Part V, line 4; Part X, line 2; Part XI, lines 2d and 4b; and Part XII, lines 2d and 4b. Also complete this part to provide any additional information.

Part V, Line 4 - Intended Uses for Endowment Funds

ENDOWMENT FUNDS ARE TO BE USED FOR CAPITAL IMPROVEMENTS AND OPERATING COST SHORTFALLS.

Part X - FIN 48 Footnote

THE ORGANIZATION IS EXEMPT FROM FEDERAL INCOME TAX UNDER SECTION 501(C)(3) OF THE INTERNAL REVENUE CODE. HOWEVER, INCOME, IF ANY, FROM CERTAIN ACTIVITIES NOT DIRECTLY RELATED TO THE ORGANIZATION'S TAX-EXEMPT PURPOSE IS SUBJECT TO TAXATION AS UNRELATED BUSINESS INCOME. IN ADDITION, THE ORGANIZATION QUALIFIES FOR THE CHARITABLE CONTRIBUTION DEDUCTION UNDER SECTION 170(B)(1)(A) AND HAS BEEN CLASSIFIED AS AN ORGANIZATION OTHER THAN A PRIVATE FOUNDATION UNDER SECTION 509(A)(2).

Part XIII Supplemental Information (continued)

THE ORGANIZATION BELIEVES THAT IT HAS APPROPRIATE SUPPORT FOR ANY TAX POSITIONS TAKEN, AND AS SUCH, DOES NOT HAVE ANY UNCERTAIN TAX POSITIONS THAT ARE MATERIAL TO THE FINANCIAL STATEMENTS. THE ORGANIZATION'S FORMS 990, RETURN OF ORGANIZATION EXEMPT FROM INCOME TAX FOR 2023, 2022, AND 2021 ARE SUBJECT TO EXAMINATION BY THE IRS, GENERALLY FOR THREE YEARS AFTER THEY ARE FILED.

Part XI, Line 2d - Revenue Amounts Included in Financials - Other

USE OF LEASED VEHICLES \$ 7,136

Part XI, Line 4b - Revenue Amounts Included on Return - Other

SPECIAL EVENTS-COST OF DIRECT BENEFITS TO DONORS \$ -108,320

Part XII, Line 2d - Expense Amounts Included in Financials - Other

USE OF LEASED VEHICLES \$ 7,136

Part XII, Line 4b - Expense Amounts Included on Return - Other

SPECIAL EVENTS-COST OF DIRECT BENEFITS TO DONORS \$ -108,320

**SCHEDULE G
(Form 990)**

Department of the Treasury
Internal Revenue Service

Supplemental Information Regarding Fundraising or Gaming Activities

Complete if the organization answered "Yes" on Form 990, Part IV, line 17, 18, or 19, or if the organization entered more than \$15,000 on Form 990-EZ, line 6a.

Attach to Form 990 or Form 990-EZ.

Go to www.irs.gov/Form990 for instructions and the latest information.

OMB No. 1545-0047

2023

Open to Public Inspection

Name of the organization

**RONALD MCDONALD HOUSE CHARITIES
OF THE PIEDMONT TRIAD, INC.**

Employer identification number

58-1454715

Part I Fundraising Activities. Complete if the organization answered "Yes" on Form 990, Part IV, line 17. Form 990-EZ filers are not required to complete this part.

1 Indicate whether the organization raised funds through any of the following activities. Check all that apply.

- a Mail solicitations
- b Internet and email solicitations
- c Phone solicitations
- d In-person solicitations
- e Solicitation of non-government grants
- f Solicitation of government grants
- g Special fundraising events

2a Did the organization have a written or oral agreement with any individual (including officers, directors, trustees, or key employees listed in Form 990, Part VII) or entity in connection with professional fundraising services? Yes No

b If "Yes," list the 10 highest paid individuals or entities (fundraisers) pursuant to agreements under which the fundraiser is to be compensated at least \$5,000 by the organization.

(i) Name and address of individual or entity (fundraiser)	(ii) Activity	(iii) Did fundraiser have custody or control of contributions?		(iv) Gross receipts from activity	(v) Amount paid to (or retained by) fundraiser listed in col. (i)	(vi) Amount paid to (or retained by) organization
		Yes	No			
TRUE SENSE MARKETING 1 502 KEYSTONE DR WARRENDALE PA 15086	DIRECTMAIL		X	166,276	105,398	60,878
2						
3						
4						
5						
6						
7						
8						
9						
10						
Total				166,276	105,398	60,878

3 List all states in which the organization is registered or licensed to solicit contributions or has been notified it is exempt from registration or licensing.

North Carolina, Alaska, Alabama, Arkansas, California, Colorado, Connecticut, Dist of Columbia, Florida, Georgia, Hawaii, Illinois, Kansas, Kentucky, Louisiana, Massachusetts, Maryland, Maine, Michigan, Minnesota, Missouri, Mississippi, North Dakota, Nebraska, New Hampshire, New Jersey, New Mexico, Nevada, New York, Ohio, Oklahoma, Oregon, Pennsylvania, Rhode Island, South Carolina, Tennessee, Texas, Utah, Virginia, Washington,

Part II Fundraising Events. Complete if the organization answered "Yes" on Form 990, Part IV, line 18, or reported more than \$15,000 of fundraising event contributions and gross income on Form 990-EZ, lines 1 and 6b. List events with gross receipts greater than \$5,000.

		(a) Event #1	(b) Event #2	(c) Other events	(d) Total events	
		GOLF TOURNAMENT (event type)	SPORT-A-SHIRT (event type)	2 (total number)	(add col. (a) through col. (c))	
Revenue	1	Gross receipts	182,151	160,701	149,187	492,039
	2	Less: Contributions	142,150	92,551	49,231	283,932
	3	Gross income (line 1 minus line 2)	40,001	68,150	99,956	208,107
Direct Expenses	4	Cash prizes				
	5	Noncash prizes				
	6	Rent/facility costs	675		1,750	2,425
	7	Food and beverages	31,936	91	4,351	36,378
	8	Entertainment				
	9	Other direct expenses	13,040	33,695	22,782	69,517
	10	Direct expense summary. Add lines 4 through 9 in column (d)				
11	Net income summary. Subtract line 10 from line 3, column (d)					99,787

Part III Gaming. Complete if the organization answered "Yes" on Form 990, Part IV, line 19, or reported more than \$15,000 on Form 990-EZ, line 6a.

		(a) Bingo	(b) Pull tabs/instant bingo/progressive bingo	(c) Other gaming	(d) Total gaming (add col. (a) through col. (c))	
		1	Gross revenue			
Direct Expenses	2	Cash prizes				
	3	Noncash prizes				
	4	Rent/facility costs				
	5	Other direct expenses				
	6	Volunteer labor	<input type="checkbox"/> Yes <input checked="" type="checkbox"/> No %	<input type="checkbox"/> Yes <input checked="" type="checkbox"/> No %	<input type="checkbox"/> Yes <input checked="" type="checkbox"/> No %	
7	Direct expense summary. Add lines 2 through 5 in column (d)					
8	Net gaming income summary. Subtract line 7 from line 1, column (d)					

9 Enter the state(s) in which the organization conducts gaming activities: _____

a Is the organization licensed to conduct gaming activities in each of these states? Yes No

b If "No," explain: _____

10a Were any of the organization's gaming licenses revoked, suspended, or terminated during the tax year? Yes No

b If "Yes," explain: _____

SCHEDULE G (Form 990 or 990-EZ)	Supplemental Information	2023
For calendar year 2023, or tax year beginning _____, and ending _____		Employer identification number
Name of the organization RONALD MCDONALD HOUSE CHARITIES OF THE PIEDMONT TRIAD, INC.	58-1454715	

Schedule G, Page 3, Part IV - Additional Information

SCHEDULE G, PAGE 1, PART 1, LINE 2B, COLUMN (iii) - DID FUNDRAISER HAVE CUSTODY OR CONTROL OF CONTRIBUTIONS? NO.

CUSTODY ARRANGEMENT WITH TRUE SENSE MARKETING: CONTRIBUTIONS RESULTING FROM TRUE SENSE MARKETING DIRECT MAIL SOLICITATIONS, ARE MAILED DIRECTLY TO AN INDEPENDENT THIRD PARTY CONTRACTOR, DIRECT MAIL PROCESSORS (DMP). ON A WEEKLY BASIS, DMP RECORDS ALL DONATIONS AND DEPOSITS THEM INTO THE BANK ACCOUNT OF RMHCPT. TRUE SENSE MARKETING RECONCILES THE DEPOSIT REPORTS TO THE DONATION REPORTS AND EMAILS THE DONATION REPORTS TO RMHCPT. THE MONTHLY BANK STATEMENT IS MAILED DIRECTLY TO RMHCPT EACH MONTH WHERE IT IS RECONCILED.

BEGINNING IN FEBRUARY 2016, RMHCPT ENGAGED THE SERVICES OF TRUE SENSE MARKETING, A PROFESSIONAL FUNDRAISING CONSULTING FIRM, TO ASSIST RMHCPT IN ESTABLISHING A DIRECT MAIL DONATION PROGRAM. THE NATURE OF THIS TYPE OF PROGRAM IS SUCH THAT THE TIME FRAME FOR THE RECEIPT OF A MAJOR INDIVIDUAL DONATION MAY BE YEARS IN THE FUTURE. THEREFORE, AN ANNUAL SNAPSHOT OF THE GROSS RECEIPTS RAISED THROUGH THIS ACTIVITY MAY NOT ACCURATELY REFLECT THE SUCCESS OF THE PROGRAM. RMHCPT WILL DEVELOP A NUMBER OF DONOR PROSPECTS FOR FUTURE GIFTS FROM THE INITIATION OF THIS PROGRAM. WE BELIEVE THIS ACTIVITY IS IMPORTANT TO FUTURE OPERATIONAL FUNDING REQUIREMENTS WHICH WILL ALLOW US TO REMAIN FINANCIALLY SOUND.

SCHEDULE G, PAGE 1, PART 1, LINE 3

WISCONSIN, WEST VIRGINIA

**SCHEDULE M
(Form 990)**

Department of the Treasury
Internal Revenue Service
Name of the organization

Noncash Contributions

Complete if the organizations answered "Yes" on Form 990, Part IV, lines 29 or 30.
Attach to Form 990.
Go to www.irs.gov/Form990 for instructions and the latest information.

OMB No. 1545-0047

2023

**Open To Public
Inspection**

OF THE PIEDMONT TRIAD, INC.

Employer identification number
58-1454715

Part I Types of Property

	(a) Check if applicable	(b) Number of contributions or items contributed	(c) Noncash contribution amounts reported on Form 990, Part VIII, line 1g	(d) Method of determining noncash contribution amounts
1 Art — Works of art				
2 Art — Historical treasures				
3 Art — Fractional interests				
4 Books and publications				
5 Clothing and household goods	X		116,717	
6 Cars and other vehicles	X	8	14,025	
7 Boats and planes				
8 Intellectual property				
9 Securities — Publicly traded	X	6	5,297	
10 Securities — Closely held stock				
11 Securities — Partnership, LLC, or trust interests				
12 Securities — Miscellaneous				
13 Qualified conservation contribution — Historic structures				
14 Qualified conservation contribution — Other				
15 Real estate — Residential				
16 Real estate — Commercial				
17 Real estate — Other				
18 Collectibles				
19 Food inventory	X	333	71,028	
20 Drugs and medical supplies				
21 Taxidermy				
22 Historical artifacts				
23 Scientific specimens				
24 Archeological artifacts				
25 Other ()				
26 Other ()				
27 Other ()				
28 Other ()				

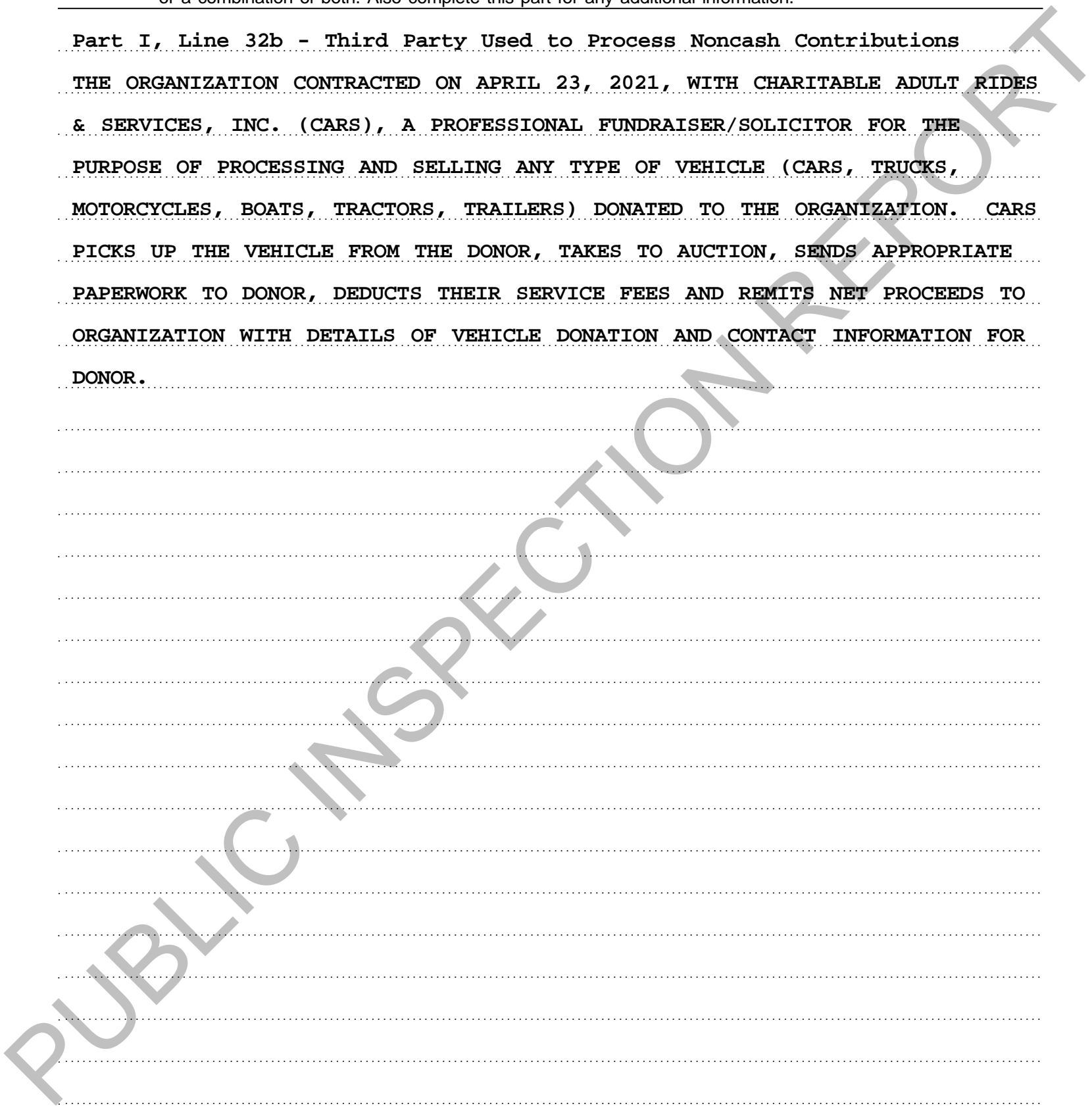
29 Number of Forms 8283 received by the organization during the tax year for contributions for which the organization completed Form 8283, Part V, Donee Acknowledgement **29**

	Yes	No
30a During the year, did the organization receive by contribution any property reported in Part I, lines 1 through 28, that it must hold for at least 3 years from the date of the initial contribution, and which isn't required to be used for exempt purposes for the entire holding period?		X
b If "Yes," describe the arrangement in Part II.		
31 Does the organization have a gift acceptance policy that requires the review of any nonstandard contributions?	X	
32a Does the organization hire or use third parties or related organizations to solicit, process, or sell noncash contributions?	X	
b If "Yes," describe in Part II.		
33 If the organization didn't report an amount in column (c) for a type of property for which column (a) is checked, describe in Part II.		

Part II Supplemental Information. Provide the information required by Part I, lines 30b, 32b, and 33, and whether the organization is reporting in Part I, column (b), the number of contributions, the number of items received, or a combination of both. Also complete this part for any additional information.

Part I, Line 32b - Third Party Used to Process Noncash Contributions

THE ORGANIZATION CONTRACTED ON APRIL 23, 2021, WITH CHARITABLE ADULT RIDES & SERVICES, INC. (CARS), A PROFESSIONAL FUNDRAISER/SOLICITOR FOR THE PURPOSE OF PROCESSING AND SELLING ANY TYPE OF VEHICLE (CARS, TRUCKS, MOTORCYCLES, BOATS, TRACTORS, TRAILERS) DONATED TO THE ORGANIZATION. CARS PICKS UP THE VEHICLE FROM THE DONOR, TAKES TO AUCTION, SENDS APPROPRIATE PAPERWORK TO DONOR, DEDUCTS THEIR SERVICE FEES AND REMITS NET PROCEEDS TO ORGANIZATION WITH DETAILS OF VEHICLE DONATION AND CONTACT INFORMATION FOR DONOR.



**SCHEDULE O
(Form 990)**Department of the Treasury
Internal Revenue Service**Supplemental Information to Form 990 or 990-EZ**Complete to provide information for responses to specific questions on
Form 990 or 990-EZ or to provide any additional information.

Attach to Form 990 or Form 990-EZ.

Go to www.irs.gov/Form990 for the latest information.

OMB No. 1545-0047

2023**Open to Public
Inspection**

Name of the organization	RONALD MCDONALD HOUSE CHARITIES OF THE PIEDMONT TRIAD, INC.	Employer identification number	58-1454715
--------------------------	--	--------------------------------	-------------------

Form 990, Part III, Line 4a - First Accomplishment

RONALD MCDONALD HOUSE CHARITIES OF THE PIEDMONT TRIAD, INC. (RMHCPT) OWNS AND OPERATES A 36-BEDROOM FACILITY THAT PROVIDES TEMPORARY LODGING FOR FAMILIES OF SERIOUSLY ILL CHILDREN WHO MUST LEAVE THEIR HOME COMMUNITY TO SEEK MEDICAL CARE FOR THEIR CHILDREN IN OUR COMMUNITY. FOR MOST OF THE FAMILIES WE SERVE, THEIR CHILDREN ARE PATIENTS AT ATRIUM HEALTH WAKE FOREST BAPTIST BRENNER CHILDREN'S HOSPITAL OR NOVANT HEALTH FORSYTH MEDICAL CENTER. HOWEVER, ANY MEDICAL FACILITY IN OUR COMMUNITY (SERVICE AREA) MAY REFER FAMILIES CARING FOR PEDIATRIC PATIENTS. MORE THAN A PLACE TO STAY, OUR RONALD MCDONALD HOUSE OFFERS OUR GUEST FAMILIES COMFORTABLE BEDROOMS, HOME-COOKED MEALS, LAUNDRY FACILITIES, FREE PARKING, AREAS FOR RECREATION AND THE SUPPORT OF PROFESSIONAL STAFF AND OTHER GUESTS IN SIMILAR CIRCUMSTANCES. IN 2023, OUR HOUSE SERVED 893 FAMILIES FROM 56 NORTH CAROLINA COUNTIES, AND 14 OTHER STATES. FAMILIES ARE ASKED FOR A DONATION OF \$10.00 FOR EACH NIGHT THEY STAY WITH US. NO ONE IS TURNED AWAY DUE TO AN INABILITY TO PAY AND APPROXIMATELY 92% OF OUR FAMILIES ARE UNABLE TO DONATE ANY AMOUNT. THE DIFFERENCE BETWEEN THE COST TO OPERATE EACH ROOM AND THE AMOUNT PAID BY OUR FAMILIES IS FUNDED BY COMMUNITY DONATIONS. CIVIC GROUPS, CHURCHES AND INDIVIDUALS CONTRIBUTE TO PROVIDE FUNDING FOR OUR HOUSE. IN-KIND GOODS AND SERVICES VALUED IN EXCESS OF \$232,000 ENHANCE THE SERVICES PROVIDED TO OUR FAMILIES AND REDUCE THE AMOUNT OF FINANCIAL DONATIONS SPENT ON PROGRAMS, ADMINISTRATIVE AND FUNDRAISING COSTS. SOME EXAMPLES OF OUR IN-KIND GIFTS INCLUDE: LAUDRY, YARD WORK AND LANDSCAPING SERVICES, 418 MEALS PREPARED BY VOLUNTEERS OR PROVIDED BY LOCAL RESTURANTS AS DONATIONS OR PURCHASED WITH DONATED FUNDS, SNACK FOODS, DRINKS,

For Paperwork Reduction Act Notice, see the Instructions for Form 990 or 990-EZ.

Schedule O (Form 990) 2023

Name of the organization

Employer identification number

RONALD MCDONALD HOUSE CHARITIES

58-1454715

HOUSEHOLD AND PAPER GOODS. WE ENJOYED HAVING 30 VOLUNTEERS PROVIDING 1,557 HOURS TO SUPPORT STAFF AND FAMILIES IN OUR HOUSE ON A REGULAR BASIS BY ASSISTING IN MEAL PREPARATION, GUEST FAMILY RELATIONS, OFFICE AND HOUSEKEEPING DUTIES. IN ADDITION, 1,280 ONE-TIME VOLUNTEERS SERVING 3,450 HOURS, WERE INVOLVED IN PROMOTING THE HOUSE AND IMPLEMENTING THE HOUSE'S ANNUAL SERVICE & FUNDRAISING EVENTS: HOUSE AND GROUNDS CLEANING, SPORT-A-SHIRT/SHARE-A-NIGHT, DBMC GOLF TOURNAMENT, CHARACTER BREAKFAST AND LUMINARY KIT SALES.

Form 990, Part III, Line 4b - Second Accomplishment

THE RMHCPT FAMILY SUPPORT SERVICES PROGRAM PROVIDES ASSISTANCE, EDUCATION, AND REFERRAL SERVICE NECESSARY TO PROMOTE THE WELL-BEING OF THE WHOLE FAMILY. THE PROGRAM HELPS FAMILIES ADJUST TO THEIR CHILD'S ILLNESS BY OFFERING SERVICES THAT ENRICH PARENTING AND COPING SKILLS. SUPPORT SERVICES ARE OFFERED THROUGH DAILY VISITS WITH FAMILIES AT THE HOSPITAL BY THE FAMILY SUPPORT MANAGER AND VOLUNTEERS, INFORMAL SUPPORT GROUPS, RELAXATION AND STRESS MANAGEMENT SESSIONS, RECREATIONAL ACTIVITIES FOR SIBLINGS, FAMILY MEMBER BIRTHDAYS, HOLIDAY CELEBRATIONS, PET THERAPY AND BINGO. EDUCATIONAL RESOURCES INCLUDE ONE-ON-ONE TRAINING, AND PARENTING WORKSHOPS. A FAMILY RESOURCE LIBRARY WITH BOOKS, VIDEOS AND COMPUTER IS AVAILABLE TO DO RESEARCH. TRANSPORTATION TO MEDICAL APPOINTMENTS AND MEDICAL FACILITIES, AND ASSISTANCE WITH ACCESS TO COMMUNITY RESOURCES IS AVAILABLE. WE HAD 11 RECURRING FAMILY SUPPORT SERVICES VOLUNTEERS PROVIDING 158 VOLUNTEER HOURS.

Form 990, Part III, Line 4c - Third Accomplishment

RMHCPT OPERATES THREE RONALD MCDONALD FAMILY ROOMS. ONE IS LOCATED ON THE

Name of the organization

Employer identification number

RONALD MCDONALD HOUSE CHARITIES

58-1454715

SIXTH FLOOR OF ATRIUM HEALTH WAKE FOREST BAPTIST BRENNER CHILDREN'S HOSPITAL, ONE ON THE THIRD FLOOR OF NOVANT HEALTH FORSYTH MEDICAL CENTER, AND ONE ON THE SIXTH FLOOR OF MOSES H. CONE MEMORIAL HOSPITAL. THE FAMILY ROOMS OFFER THE DAY SERVICES OF THE RONALD MCDONALD HOUSE WITHIN THE WALLS OF THE HOSPITAL. COMFORTABLE SEATING AREAS, A KITCHEN STOCKED WITH COMPLIMENTARY DRINKS AND SNACKS, AND COMPUTERS WITH INTERNET ACCESS ARE AMONG THE AMENITIES PROVIDED. THE FAMILY ROOMS ARE OPEN TO ANY FAMILY WITH A PEDIATRIC PATIENT RECEIVING TREATMENT AT THE HOSPITAL. OUR 139 VOLUNTEERS GAVE 8,092 HOURS TO STAFF OUR FAMILY ROOMS MONDAY THROUGH SUNDAY. THE FAMILY ROOMS WELCOMED 4,775 UNIQUE VISITORS FOR 14,806 VISITS FROM 52 NORTH CAROLINA COUNTIES AND 18 OTHER STATES.

Form 990, Part III, Line 4d - All Other Accomplishments

RMHCPT OFFERS A HOSPITALITY CART/PERSONAL CARE KIT PROGRAM TO SERVE: (1) PARENTS THAT ARE RELUCTANT TO LEAVE THEIR CHILD'S BEDSIDE AND/OR (2) MOTHERS-TO-BE THAT ARE RECEIVING ANTEPARTUM CARE AT HOSPITAL PRIOR TO BIRTH OF A CHILD WITH MEDICAL CHALLENGES AND (3) FAMILIES RECEIVING SERVICES AT A HOSPITAL/MEDICAL FACILITY TOO SMALL TO SUPPORT A RONALD MCDONALD FAMILY ROOM OR EVEN THE SERVICES OF A HOSPITALITY CART. OUR EIGHT HOSPITALITY CARTS OPERATING AT ATRIUM HEALTH WAKE FOREST BAPTIST BRENNER CHILDREN'S HOSPITAL (TWO), ATRIUM HEALTH WAKE FOREST BAPTIST DOWNTOWN HEALTH PLAZA (ONE), NOVANT HEALTH FORSYTH MEDICAL CENTER (ONE), NOVANT HEALTH THOMASVILLE MEDICAL CENTER (ONE), NOVANT HEALTH WAUGHTOWN PEDIATRICS CLINIC (ONE) AND CONE HEALTH M.H. CONE MEMORIAL HOSPITAL (ONE) AND CONE HEALTH TIM & CAROLYNN RICE CENTER (ONE) ARE COMPLEMENTED BY THE PERSONAL CARE KIT PROGRAMS OPERATING AT HIGH POINT MEDICAL CENTER AND RANDOLPH HEALTH. OUR 25 HOSPITALITY CART/PERSONAL CARE KIT VOLUNTEERS

Name of the organization

Employer identification number

RONALD MCDONALD HOUSE CHARITIES

58-1454715

GIVING 1,171 HOURS OF SERVICE JOINED STAFF IN SERVING 21,151 INDIVIDUALS WITH ITEMS FROM OUR HOSPITALITY CARTS AND/OR DISTRIBUTION OF PERSONAL CARE KITS.

Form 990, Part VI, Line 11b - Organization's Process to Review Form 990
THE CHIEF EXECUTIVE OFFICER AND A MEMBER OF THE FINANCE COMMITTEE THOROUGHLY REVIEW A DRAFT OF THE FORM 990. FOLLOWING THIS REVIEW AND CHANGES, IF ANY, A DRAFT OF THE FORM 990 IS EMAILED TO BOARD MEMBERS OF RMHCPT FOR COMMENTS AND REVIEW BEFORE FINALIZING AND FILING ELECTRONICALLY WITH THE IRS.

Form 990, Part VI, Line 12c - Enforcement of Conflicts Policy
ANNUALLY, EACH MEMBER OF THE RMHCPT BOARD OF DIRECTORS AND SENIOR STAFF LEADERSHIP SIGN OUR ANNUAL CONFLICT OF INTEREST FORM. THE FORMS ARE FILED WITH THE CHIEF EXECUTIVE OFFICER WHO REVIEWS EACH ONE TO DETERMINE IF THERE ARE ANY POTENTIAL CONFLICTS THAT MIGHT INFLUENCE DECISION MAKING. ANY MEMBER WITH A POTENTIAL CONFLICT OF INTEREST IS INELIGIBLE TO VOTE ON MATTERS INVOLVING THAT INTEREST AT BOTH THE COMMITTEE AND BOARD LEVEL.

Form 990, Part VI, Line 15a - Compensation Process for Top Official
FOR THE CHIEF EXECUTIVE OFFICER POSITION, THE BOARD DESIGNATES THE BOARD GOVERNANCE COMMITTEE TO GATHER BOARD AND STAFF PERFORMANCE FEEDBACK AND COMPARABLE SALARY DATA. THE COMMITTEE RECOMMENDS COMPENSATION BASED UPON THIS DATA, COMPARABILITY FACTORS INCLUDING BUT NOT LIMITED TO THE SIZE OF THE ORGANIZATION, THE GEOGRAPHICAL LOCATION OF THE ORGANIZATION AND THE EMPLOYEE'S LENGTH OF SERVICE AND PRIOR APPLICABLE EXPERIENCE. THE BOARD DESIGNATES THE EXECUTIVE COMMITTEE TO REVIEW THE COMMENTS AND THE

Name of the organization

Employer identification number

RONALD MCDONALD HOUSE CHARITIES

58-1454715

RECOMMENDATIONS FROM THE BOARD GOVERNANCE COMMITTEE AND TO SET THE COMPENSATION PACKAGE FOR THE CHIEF EXECUTIVE OFFICER.

Form 990, Part VI, Line 15b - Compensation Process for Officers

THE CHIEF EXECUTIVE OFFICER REVIEWS THE COMPENSATION OF KEY EMPLOYEES AND SUBMITS RECOMMENDATIONS TO THE FINANCE COMMITTEE AS PART OF THE ANNUAL BUDGET PROCESS. THE ANNUAL BUDGET IS APPROVED BY THE BOARD. SALARY AND WAGE RANGES FOR ALL STAFF POSITIONS ARE REVIEWED BY A PAID INDEPENDENT THIRD PARTY AT LEAST EVERY FIVE YEARS.

Form 990, Part VI, Line 19 - Governing Documents Disclosure Explanation

GOVERNING DOCUMENTS AND FINANCIAL STATEMENTS ARE AVAILABLE ON THE ORGANIZATION'S WEBSITE AND UPON REQUEST AT THEIR ADMINISTRATIVE OFFICE LOCATED AT THEIR MAIN ADDRESS. THE CONFLICT OF INTEREST POLICY IS ALSO AVAILABLE UPON REQUEST AT THEIR ADMINISTRATIVE OFFICE LOCATED AT THEIR MAIN ADDRESS.

Form 990, Part XI, Line 9 - Other Changes in Net Assets Explanation

USE OF LEASED VEHICLES	\$	7,136
SPECIAL EVENTS-COST OF DIRECT BENEFITS TO DONORS	\$	108,320
USE OF LEASED VEHICLES	\$	-7,136
SPECIAL EVENTS-COST OF DIRECT BENEFITS TO DONORS	\$	-108,320

Form **4562**

Department of the Treasury
Internal Revenue Service

Depreciation and Amortization
(Including Information on Listed Property)
Attach to your tax return.

Go to www.irs.gov/Form4562 for instructions and the latest information.

OMB No. 1545-0172

2023

Attachment Sequence No. **179**

Name(s) shown on return **RONALD MCDONALD HOUSE CHARITIES
OF THE PIEDMONT TRIAD, INC.**

Identifying number
58-1454715

Business or activity to which this form relates

Indirect Depreciation

Part I Election To Expense Certain Property Under Section 179

Note: If you have any listed property, complete Part V before you complete Part I.

1	Maximum amount (see instructions)	1	1,160,000
2	Total cost of section 179 property placed in service (see instructions)	2	
3	Threshold cost of section 179 property before reduction in limitation (see instructions)	3	2,890,000
4	Reduction in limitation. Subtract line 3 from line 2. If zero or less, enter -0-	4	
5	Dollar limitation for tax year. Subtract line 4 from line 1. If zero or less, enter -0-. If married filing separately, see instructions	5	
6	(a) Description of property	(b) Cost (business use only)	(c) Elected cost
7	Listed property. Enter the amount from line 29	7	
8	Total elected cost of section 179 property. Add amounts in column (c), lines 6 and 7	8	
9	Tentative deduction. Enter the smaller of line 5 or line 8	9	
10	Carryover of disallowed deduction from line 13 of your 2022 Form 4562	10	
11	Business income limitation. Enter the smaller of business income (not less than zero) or line 5. See instructions	11	
12	Section 179 expense deduction. Add lines 9 and 10, but don't enter more than line 11	12	
13	Carryover of disallowed deduction to 2024. Add lines 9 and 10, less line 12	13	

Note: Don't use Part II or Part III below for listed property. Instead, use Part V.

Part II Special Depreciation Allowance and Other Depreciation (Don't include listed property. See instructions.)

14	Special depreciation allowance for qualified property (other than listed property) placed in service during the tax year. See instructions	14	
15	Property subject to section 168(f)(1) election	15	
16	Other depreciation (including ACRS)	16	289,279

Part III MACRS Depreciation (Don't include listed property. See instructions.)

Section A

17	MACRS deductions for assets placed in service in tax years beginning before 2023	17	0
18	If you are electing to group any assets placed in service during the tax year into one or more general asset accounts, check here <input type="checkbox"/>		

Section B—Assets Placed in Service During 2023 Tax Year Using the General Depreciation System

(a) Classification of property	(b) Month and year placed in service	(c) Basis for depreciation (business/investment use only—see instructions)	(d) Recovery period	(e) Convention	(f) Method	(g) Depreciation deduction
19a	3-year property					
b	5-year property					
c	7-year property					
d	10-year property					
e	15-year property					
f	20-year property					
g	25-year property		25 yrs.		S/L	
h	Residential rental property		27.5 yrs.	MM	S/L	
			27.5 yrs.	MM	S/L	
i	Nonresidential real property		39 yrs.	MM	S/L	
				MM	S/L	

Section C—Assets Placed in Service During 2023 Tax Year Using the Alternative Depreciation System

20a	Class life				S/L	
b	12-year		12 yrs.		S/L	
c	30-year		30 yrs.	MM	S/L	
d	40-year		40 yrs.	MM	S/L	

Part IV Summary (See instructions.)

21	Listed property. Enter amount from line 28	21	
22	Total. Add amounts from line 12, lines 14 through 17, lines 19 and 20 in column (g), and line 21. Enter here and on the appropriate lines of your return. Partnerships and S corporations—see instructions	22	289,279
23	For assets shown above and placed in service during the current year, enter the portion of the basis attributable to section 263A costs	23	

For Paperwork Reduction Act Notice, see separate instructions.

Form **4562** (2023)

Form 990	Event Income and Deduction Worksheet	2023
Description SPORT-A-SHIRT		

Name RONALD MCDONALD HOUSE CHARITIES	Taxpayer Identification Number 58-1454715
--	---

Use this worksheet to verify data entered for a specific activity on your form 990/990EZ

Income & Expense Summary:

1. Gross receipts or sales	1.	68,150	
2. Advertising income	2.		
3. Circulation income	3.		
4. Other income	4.		
5. Returns and allowances	5.		
6. Contributions received	6.	92,551	
7. Total revenue. Add lines 1 through 6	7.	160,701	
8. Cost of Goods Sold	8.		
9. Employment Expense	9.		
10. Fees for services	10.		
11. Indirect Expense	11.		
12. Depreciation Expense	12.		
13. Exempt Activity Expense	13.		
14. Fundraising Expense	14.	33,786	
15. Total expenses. Add lines 8 through 14	15.	33,786	
16. Net Income/Loss. Line 7 minus Line 15	16.	126,915	

Expense Details - Indirect Expense:

Advertising and promotion	
Office	
Printing/publication/postage	
Info technology/Maintenance	
Royalties & License Fees	
Occupancy/Real Estate Taxes	
Travel & Repairs	
Travel/entertainment (officials)	
Conferences/meetings	
Interest	
Insurance	
Total Indirect Expense	

Expense Details - Depreciation Expense:

On investment property	
On non-investment property	
Amortization	
Depletion	
Total Depreciation Expense	

Expense Details - Cost of Goods Sold:

Beginning inventory	
Purchases	
Labor	
Section 263A costs	
Other costs	
Ending inventory	
Total Cost of Goods Sold	

Expense Details - Exempt Activity Expense:

Repairs and Maintenance	
Bad debts	
Taxes/licenses	
Charitable contributions	
Dividend recd deductions	
Readership costs	
Other expenses	
Total Exempt Activity Expense	

Expense Details - Employment Expense:

Compensation of officers	
Other salaries and wages	
Pension plan contributions	
Other employee benefits	
Payroll taxes	
Total Employment Expense	

Expense Details - Fundraising Expense:

Cash prizes	
Non-cash prizes	
Rent and facility costs	
Food & beverages (Part II only)	91
Entertainment (Part II only)	
Other direct expenses	33,695
Total Fundraising Expense	33,786

Expense Details - Fees for Services:

Management	
Legal	
Accounting	
Lobbying	
Professional fundraising	
Investment management	
Other	
Total Fees for Services	

Allocation of Expense to Program Service Accomplishments:

First	
Second	
Third	
All other	

Information is indicated for use on Form 990-T, Schedule A:

Schedule A, UBIT Activity Code	Seq #	
<input type="checkbox"/>	Part V, Debt Financing	
<input type="checkbox"/>	Part VI, Controlled Org Income	
<input type="checkbox"/>	Part VII, Investments for C(7)(9)(17)	
<input type="checkbox"/>	Part VIII, Exploited Activities	
<input type="checkbox"/>	Part IX, Advertising Income	

Form 990	Event Income and Deduction Worksheet	2023
Description GOLF TOURNAMENT		

Name RONALD MCDONALD HOUSE CHARITIES	Taxpayer Identification Number 58-1454715
--	---

Use this worksheet to verify data entered for a specific activity on your form 990/990EZ

Income & Expense Summary:

1. Gross receipts or sales	1. <u>40,001</u>
2. Advertising income	2. _____
3. Circulation income	3. _____
4. Other income	4. _____
5. Returns and allowances	5. _____
6. Contributions received	6. <u>142,150</u>
7. Total revenue. Add lines 1 through 6	7. <u>182,151</u>
8. Cost of Goods Sold	8. _____
9. Employment Expense	9. _____
10. Fees for services	10. _____
11. Indirect Expense	11. _____
12. Depreciation Expense	12. _____
13. Exempt Activity Expense	13. _____
14. Fundraising Expense	14. <u>45,651</u>
15. Total expenses. Add lines 8 through 14	15. <u>45,651</u>
16. Net Income/Loss. Line 7 minus Line 15	16. <u>136,500</u>

Expense Details - Indirect Expense:

Advertising and promotion	_____
Office	_____
Printing/publication/postage	_____
Info technology/Maintenance	_____
Royalties & License Fees	_____
Occupancy/Real Estate Taxes	_____
Travel & Repairs	_____
Travel/entertainment (officials)	_____
Conferences/meetings	_____
Interest	_____
Insurance	_____
Total Indirect Expense	_____

Expense Details - Depreciation Expense:

On investment property	_____
On non-investment property	_____
Amortization	_____
Depletion	_____
Total Depreciation Expense	_____

Expense Details - Cost of Goods Sold:

Beginning inventory	_____
Purchases	_____
Labor	_____
Section 263A costs	_____
Other costs	_____
Ending inventory	_____
Total Cost of Goods Sold	_____

Expense Details - Employment Expense:

Compensation of officers	_____
Other salaries and wages	_____
Pension plan contributions	_____
Other employee benefits	_____
Payroll taxes	_____
Total Employment Expense	_____

Expense Details - Fees for Services:

Management	_____
Legal	_____
Accounting	_____
Lobbying	_____
Professional fundraising	_____
Investment management	_____
Other	_____
Total Fees for Services	_____

Expense Details - Exempt Activity Expense:

Repairs and Maintenance	_____
Bad debts	_____
Taxes/licenses	_____
Charitable contributions	_____
Dividend recd deductions	_____
Readership costs	_____
Other expenses	_____
Total Exempt Activity Expense	_____

Expense Details - Fundraising Expense:

Cash prizes	_____
Non-cash prizes	_____
Rent and facility costs	<u>675</u>
Food & beverages (Part II only)	<u>31,936</u>
Entertainment (Part II only)	_____
Other direct expenses	<u>13,040</u>
Total Fundraising Expense	<u>45,651</u>

Information is indicated for use on Form 990-T, Schedule A:

Schedule A, UBIT Activity Code	_____	Seq #	_____
<input type="checkbox"/>	Part V, Debt Financing		
<input type="checkbox"/>	Part VI, Controlled Org Income		
<input type="checkbox"/>	Part VII, Investments for C(7)(9)(17)		
<input type="checkbox"/>	Part VIII, Exploited Activities		
<input type="checkbox"/>	Part IX, Advertising Income		

Allocation of Expense to Program Service Accomplishments:

First	_____
Second	_____
Third	_____
All other	_____

Form 990	Event Income and Deduction Worksheet	2023
Description LUMINARY SALES		

Name RONALD MCDONALD HOUSE CHARITIES	Taxpayer Identification Number 58-1454715
--	---

Use this worksheet to verify data entered for a specific activity on your form 990/990EZ

Income & Expense Summary:

1. Gross receipts or sales	1.	93,980	
2. Advertising income	2.		
3. Circulation income	3.		
4. Other income	4.		
5. Returns and allowances	5.		
6. Contributions received	6.	20,711	
7. Total revenue. Add lines 1 through 6	7.	114,691	
8. Cost of Goods Sold	8.		
9. Employment Expense	9.		
10. Fees for services	10.		
11. Indirect Expense	11.		
12. Depreciation Expense	12.		
13. Exempt Activity Expense	13.		
14. Fundraising Expense	14.	28,284	
15. Total expenses. Add lines 8 through 14	15.	28,284	
16. Net Income/Loss. Line 7 minus Line 15	16.	86,407	

Expense Details - Indirect Expense:

Advertising and promotion	
Office	
Printing/publication/postage	
Info technology/Maintenance	
Royalties & License Fees	
Occupancy/Real Estate Taxes	
Travel & Repairs	
Travel/entertainment (officials)	
Conferences/meetings	
Interest	
Insurance	
Total Indirect Expense	

Expense Details - Depreciation Expense:

On investment property	
On non-investment property	
Amortization	
Depletion	
Total Depreciation Expense	

Expense Details - Cost of Goods Sold:

Beginning inventory	
Purchases	
Labor	
Section 263A costs	
Other costs	
Ending inventory	
Total Cost of Goods Sold	

Expense Details - Exempt Activity Expense:

Repairs and Maintenance	
Bad debts	
Taxes/licenses	
Charitable contributions	
Dividend recd deductions	
Readership costs	
Other expenses	
Total Exempt Activity Expense	

Expense Details - Employment Expense:

Compensation of officers	
Other salaries and wages	
Pension plan contributions	
Other employee benefits	
Payroll taxes	
Total Employment Expense	

Expense Details - Fundraising Expense:

Cash prizes	
Non-cash prizes	
Rent and facility costs	1,750
Food & beverages (Part II only)	4,351
Entertainment (Part II only)	
Other direct expenses	22,183
Total Fundraising Expense	28,284

Expense Details - Fees for Services:

Management	
Legal	
Accounting	
Lobbying	
Professional fundraising	
Investment management	
Other	
Total Fees for Services	

Allocation of Expense to Program Service Accomplishments:

First	
Second	
Third	
All other	

Information is indicated for use on Form 990-T, Schedule A:

Schedule A, UBIT Activity Code	Seq #	
<input type="checkbox"/>	Part V, Debt Financing	
<input type="checkbox"/>	Part VI, Controlled Org Income	
<input type="checkbox"/>	Part VII, Investments for C(7)(9)(17)	
<input type="checkbox"/>	Part VIII, Exploited Activities	
<input type="checkbox"/>	Part IX, Advertising Income	

Form 990	Event Income and Deduction Worksheet	2023
Description CHARACTER BREAKFAST		

Name RONALD MCDONALD HOUSE CHARITIES	Taxpayer Identification Number 58-1454715
--	---

Use this worksheet to verify data entered for a specific activity on your form 990/990EZ

Income & Expense Summary:

1. Gross receipts or sales	1.	5,976
2. Advertising income	2.	
3. Circulation income	3.	
4. Other income	4.	
5. Returns and allowances	5.	
6. Contributions received	6.	28,520
7. Total revenue. Add lines 1 through 6	7.	34,496
8. Cost of Goods Sold	8.	
9. Employment Expense	9.	
10. Fees for services	10.	
11. Indirect Expense	11.	
12. Depreciation Expense	12.	
13. Exempt Activity Expense	13.	
14. Fundraising Expense	14.	599
15. Total expenses. Add lines 8 through 14	15.	599
16. Net Income/Loss. Line 7 minus Line 15	16.	33,897

Expense Details - Indirect Expense:

Advertising and promotion	_____
Office	_____
Printing/publication/postage	_____
Info technology/Maintenance	_____
Royalties & License Fees	_____
Occupancy/Real Estate Taxes	_____
Travel & Repairs	_____
Travel/entertainment (officials)	_____
Conferences/meetings	_____
Interest	_____
Insurance	_____
Total Indirect Expense	_____

Expense Details - Depreciation Expense:

On investment property	_____
On non-investment property	_____
Amortization	_____
Depletion	_____
Total Depreciation Expense	_____

Expense Details - Cost of Goods Sold:

Beginning inventory	_____
Purchases	_____
Labor	_____
Section 263A costs	_____
Other costs	_____
Ending inventory	_____
Total Cost of Goods Sold	_____

Expense Details - Exempt Activity Expense:

Repairs and Maintenance	_____
Bad debts	_____
Taxes/licenses	_____
Charitable contributions	_____
Dividend recd deductions	_____
Readership costs	_____
Other expenses	_____
Total Exempt Activity Expense	_____

Expense Details - Employment Expense:

Compensation of officers	_____
Other salaries and wages	_____
Pension plan contributions	_____
Other employee benefits	_____
Payroll taxes	_____
Total Employment Expense	_____

Expense Details - Fundraising Expense:

Cash prizes	_____
Non-cash prizes	_____
Rent and facility costs	_____
Food & beverages (Part II only)	_____
Entertainment (Part II only)	_____
Other direct expenses	599
Total Fundraising Expense	599

Expense Details - Fees for Services:

Management	_____
Legal	_____
Accounting	_____
Lobbying	_____
Professional fundraising	_____
Investment management	_____
Other	_____
Total Fees for Services	_____

Information is indicated for use on Form 990-T, Schedule A:

Schedule A, UBIT Activity Code	_____	Seq #	_____
<input type="checkbox"/>	Part V, Debt Financing		
<input type="checkbox"/>	Part VI, Controlled Org Income		
<input type="checkbox"/>	Part VII, Investments for C(7)(9)(17)		
<input type="checkbox"/>	Part VIII, Exploited Activities		
<input type="checkbox"/>	Part IX, Advertising Income		

Allocation of Expense to Program Service Accomplishments:

First	_____
Second	_____
Third	_____
All other	_____

Form 990	Tax Return History	2023
-----------------	---------------------------	-------------

Name RONALD MCDONALD HOUSE CHARITIES OF THE PIEDMONT TRIAD, INC.	Employer Identification Number 58-1454715
---	---

	2019	2020	2021	2022	2023	2024
Contributions, gifts, grants				1,750,232	2,112,127	
Membership dues				23,700		
Program service revenue				8,416	5,334	
Capital gain or loss				203,802	97,828	
Investment income				64,423	118,295	
Fundraising revenue (income/loss)				87,299	99,787	
Gaming revenue (income/loss)						
Other revenue						
Total revenue				2,137,872	2,433,371	
Grants and similar amounts paid						
Benefits paid to or for members						
Compensation of officers, etc.				137,578	143,200	
Other compensation				817,184	906,188	
Professional fees				250,018	240,024	
Occupancy costs				38,240	52,519	
Depreciation and depletion				277,930	291,886	
Other expenses				633,777	797,172	
Total expenses				2,154,727	2,430,989	
Excess or (Deficit)				-16,855	2,382	
Total exempt revenue				2,137,872	2,433,371	
Total unrelated revenue						
Total excludable revenue				363,940	321,244	
Total Assets				15,529,329	16,500,185	
Total Liabilities				85,773	81,486	
Net Fund Balances				15,443,556	16,418,699	

Federal Statements**Taxable Interest on Investments**

<u>Description</u>	<u>Amount</u>	<u>Unrelated Business</u>	<u>Exclusion Code</u>	<u>Postal Code</u>	<u>Acquired after 6/30/75</u>	<u>US Obs (\$ or %)</u>
STEPHENS INC	\$ 8,321		14			
PINNACLE BANK	5,937		14			
WINSTON-SALEM FOUNDATION	1,988		14			
AMERIPRISE FINANCIAL	19		14			
Total	<u>\$ 16,265</u>					

Taxable Dividends from Securities

<u>Description</u>	<u>Amount</u>	<u>Unrelated Business</u>	<u>Exclusion Code</u>	<u>Postal Code</u>	<u>Acquired after 6/30/75</u>	<u>US Obs (\$ or %)</u>
STEPHENS INC	\$ 91,071		14			
AMERIPRISE FINANCIAL	4,647		14			
W-S FOUND - STOCK THE PANTRY	6,312		14			
Total	<u>\$ 102,030</u>					

Federal Statements

Form 990, Part IX, Line 11g - Other Fees for Service (Non-employee)

Description	Total Expenses	Program Service	Management & General	Fund Raising
STRATEGIC PLANNING SERVICES	\$ 9,922	\$ 2,459	\$ 5,963	\$ 1,500
BOOKKEEPING SERVICES	5,944		5,944	
BACKGROUND CHECK SERVICES	3,737	3,737		
FSA ACCOUNT SERVICES	2,862	2,096	310	456
STAFF RECRUITMENT SERVICES	620	370	100	150
Total	<u>\$ 23,085</u>	<u>\$ 8,662</u>	<u>\$ 12,317</u>	<u>\$ 2,106</u>

Form 990, Part IX, Line 24e - All Other Expenses

Description	Total Expenses	Program Service	Management & General	Fund Raising
VOLUNTEER RECOGNITION	\$ 16,645	\$ 13,992	\$ 1,075	\$ 1,578
TELEPHONE	12,920	11,465	522	933
TAXES, LICENSES AND FEES	10,110		10,110	
BANK FEES	3,683		3,683	
AUTOMOBILE	2,834	2,834		
LINENS & LAUNDRY	963	963		
Total	<u>\$ 47,155</u>	<u>\$ 29,254</u>	<u>\$ 15,390</u>	<u>\$ 2,511</u>

5108 RONALD MCDONALD HOUSE CHARITIES
58-1454715
FYE: 12/31/2023

Federal Statements

5/30/2024 2:07 PM

Schedule A, Part II, Line 1(e)

Description	Amount
OTHER CASH CONTRIBUTIONS	\$ 928,243
CLOTHING AND HOUSEHOLD GOODS	116,717
CARS AND OTHER VEHICLES	14,025
SECURITIES-NON CASH	5,297
FOOD INVENTORY-NON CASH	71,028
RONALD MCDONALD HOUSE CHARITIES, INC	
Cash Contribution	330,097
ESTATE OF MARY K STANLEY	
Cash Contribution	193,500
ALPHA DELTA PI FOUNDATION	
Cash Contribution	98,745
ESTATE OF LUCRETIA SHERMER	
Cash Contribution	70,543
SPORT-A-SHIRT	
Cash Contribution	92,551
GOLF TOURNAMENT	
Cash Contribution	142,150
LUMINARY SALES	
Cash Contribution	20,711
CHARACTER BREAKFAST	
Cash Contribution	28,520
Total	<u>\$ 2,112,127</u>

Federal Statements**Schedule A, Part II, Line 5 - Excess Gifts**

<u>Donor Name</u>	<u>Total</u>	<u>Excess</u>
THIRTY-ONE GIFTS LLC	\$ 15,050	\$
ESTATE OF JOYCE KOHFELDT	495,035	300,266
TRUIST (FORMERLY BB&T)	163,087	
ESTATE OF MARGARET JANE WHITE	54,040	
ESTATE OF MARY K STANLEY	557,419	362,650
ESTATE OF NORMA H LEWIS	300	
ALPHA DELTA PI FOUNDATION INC	276,236	81,467
Total	<u>\$ 1,561,167</u>	<u>\$ 744,383</u>

PUBLIC INSPECTION REPORT

5108 RONALD MCDONALD HOUSE CHARITIES
58-1454715
FYE: 12/31/2023

Federal Statements

5/30/2024 2:07 PM

Schedule A, Part II, Line 8(e)

Description	Amount
STEPHENS INC	\$ 8,321
PINNACLE BANK	5,937
WINSTON-SALEM FOUNDATION	1,988
AMERIPRISE FINANCIAL	19
STEPHENS INC	91,071
AMERIPRISE FINANCIAL	4,647
W-S FOUND - STOCK THE PANTRY	6,312
Total	<u>\$ 118,295</u>

PUBLIC INSPECTION REPORT

Federal Statements

SPORT-A-SHIRT

Other Direct Fundraising or Gaming Expenses

<u>Description</u>	<u>Amount</u>
PROGRAM SUPPLIES	\$ 33,025
PRINTING PUBLISHING	670
Total	<u>\$ 33,695</u>

PUBLIC INSPECTION REPORT

Federal Statements

GOLF TOURNAMENT

Other Direct Fundraising or Gaming Expenses

<u>Description</u>	<u>Amount</u>
PROGRAM SUPPLIES	\$ 10,312
PRINTING AND PUBLISHING	2,012
INSURANCE	716
Total	<u>\$ 13,040</u>

PUBLIC INSPECTION REPORT

Federal Statements**LUMINARY SALES****Other Direct Fundraising or Gaming Expenses**

<u>Description</u>	<u>Amount</u>
PROGRAM SUPPLIES	\$ 21,031
PRINTING AND PUBLISHING	966
CREDIT CARD FEES	186
Total	<u>\$ 22,183</u>

PUBLIC INSPECTION REPORT

Federal Statements

CHARACTER BREAKFAST

Other Direct Fundraising or Gaming Expenses

<u>Description</u>	<u>Amount</u>
PROGRAM SUPPLIES	\$ 396
PRINTING AND PUBLISHING	173
CREDIT CARD FEES	30
Total	<u>\$ 599</u>

PUBLIC INSPECTION REPORT